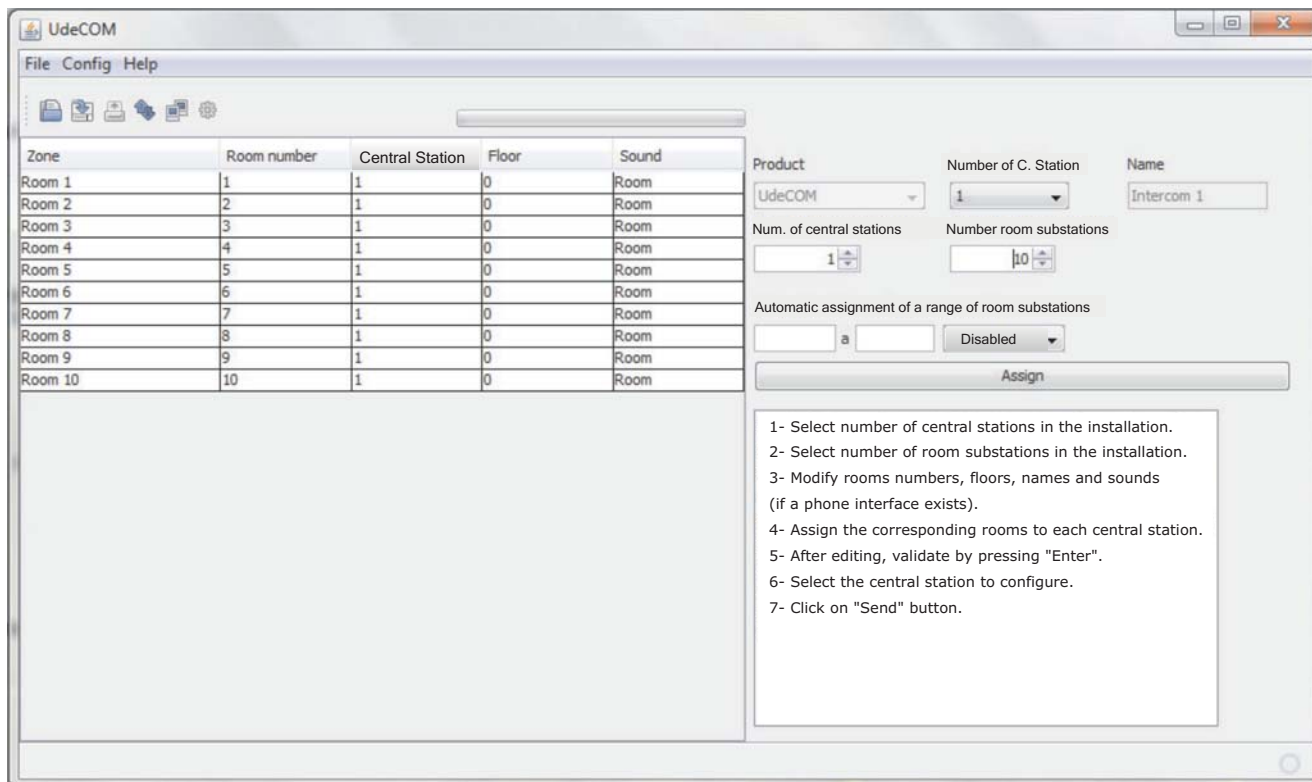


### UdeConfUC102 - ver 1.7



# CONTENTS

	Page
DOWNLOAD SOFTWARE PROCEDURE	2
SOFTWARE INSTALLATION	3
COMPUTER CONNECTION	4
UDECOM SYSTEM CONFIGURATION	5
Configuration	6 - 7
Open / save / print configuration	8
Control panel	9
Rooms configuration	10

**DOWNLOAD SOFTWARE PROCEDURE**

**32-bit or 64-bit WINDOWS OPERATING SYSTEM**

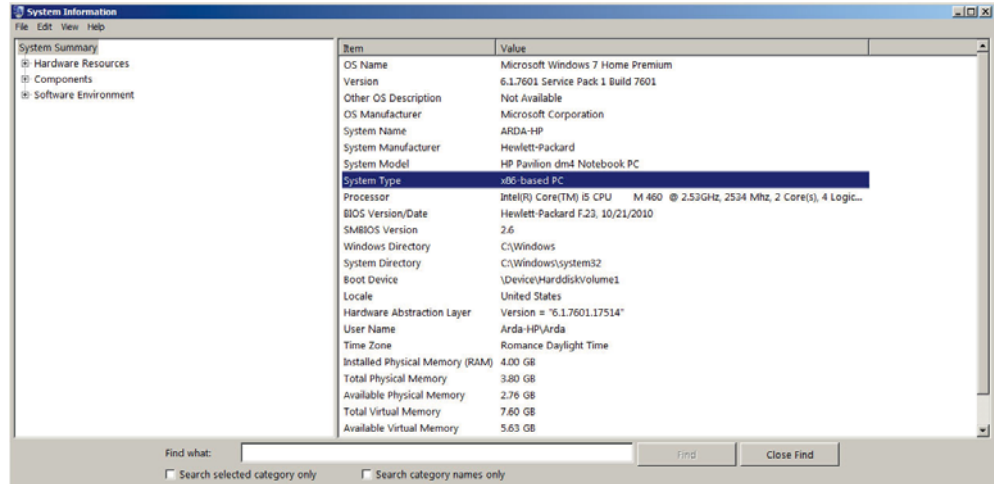
To determine whether is 32-bit or 64-bit, follow the next steps:

**WINDOWS 2000  
WINDOWS XP**

Click

- start:

- Programs
- Accessories
- System tools
- System summary



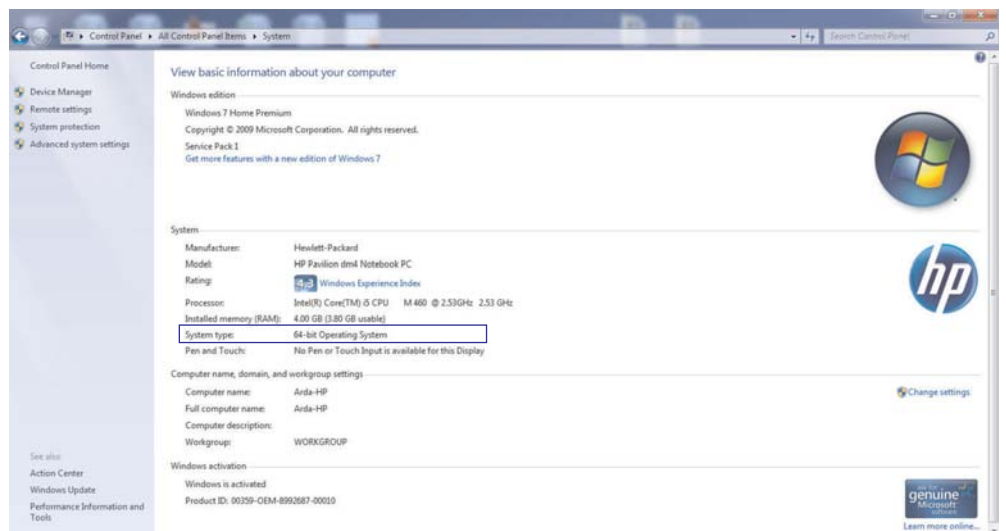
**Note:** If the **System Type** shows **x86-based PC**, it means the operating system is 32-bit.

**WINDOWS 7  
WINDOWS VISTA**

Click

- Control panel:

-System



According to the instructions above, download the corresponding zipped file.

UDEConfUC102\_x32-v.1.7\_EN  
UDEConfUC102\_x64-v.1.7\_EN

## SOFTWARE INSTALLATION

Unzip the **UDEConfUC102\_32-v1.7** folder for a 32-bit operating system (2000 , XP, VISTA 32-b) or the **UDEConfUC102\_64-v1.7** for a 64-bit operating system (VISTA 64 bits, WIN 7).

Inside the created UDEConf directory, start the program by running the UDEConfUC102.jar file.

Name	Type
lib	File folder
UDEConf	File folder
.DS_Store	DS_STORE File
README	Text Document
nrxSerial.dll	Application extens...
UDEConfCOM	Executable Jar File

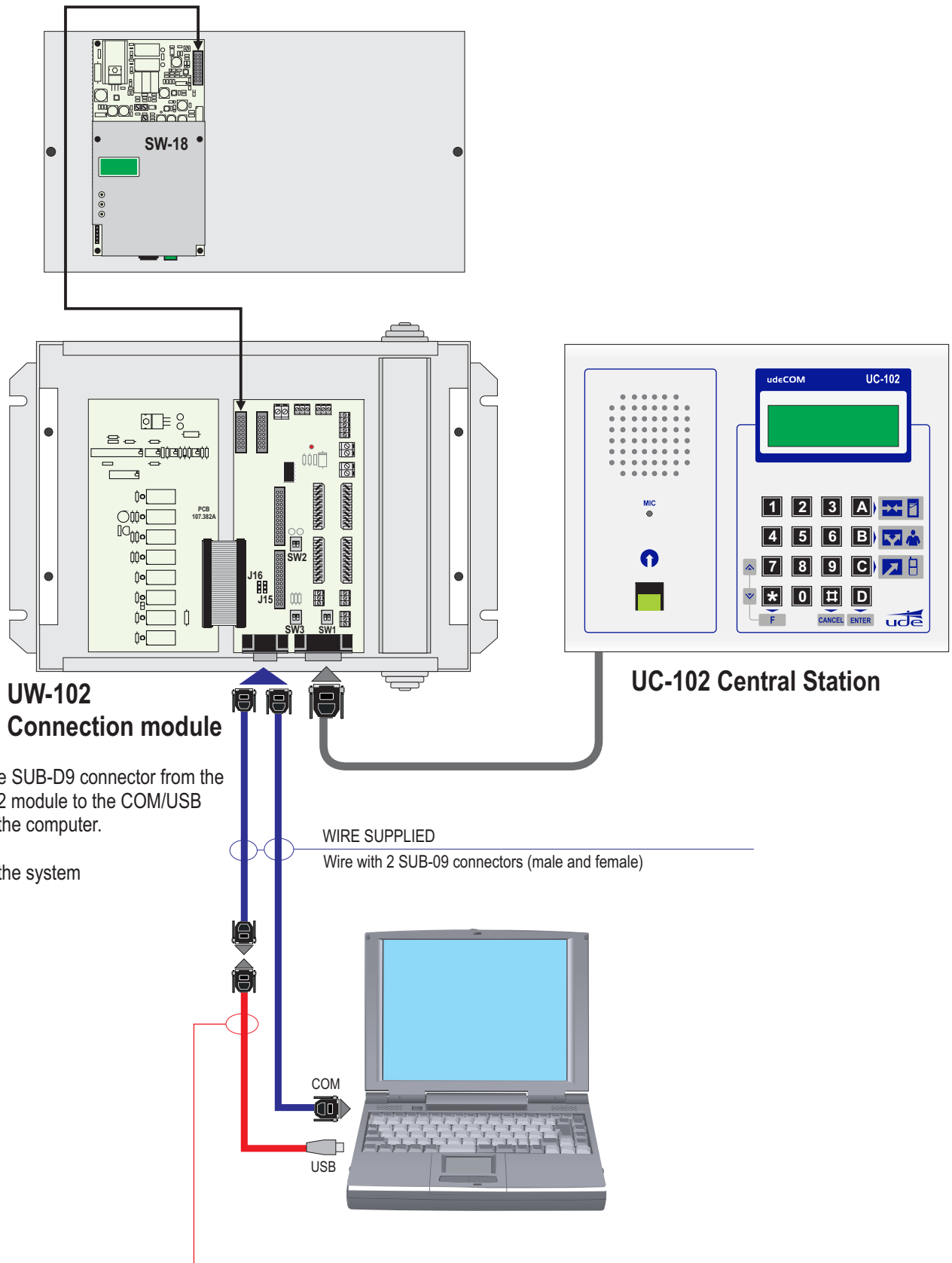


### Computer's minimum requirements

- Windows 2000
- Java JRE v6
- 512 Mb RAM
- 10Mb hard disk
- RS-232 serial port

(\* If the Java Runtime Environment v6 application has **not been** installed in the system, download from java website: <http://www.java.com/en/download/> and install it in the computer.

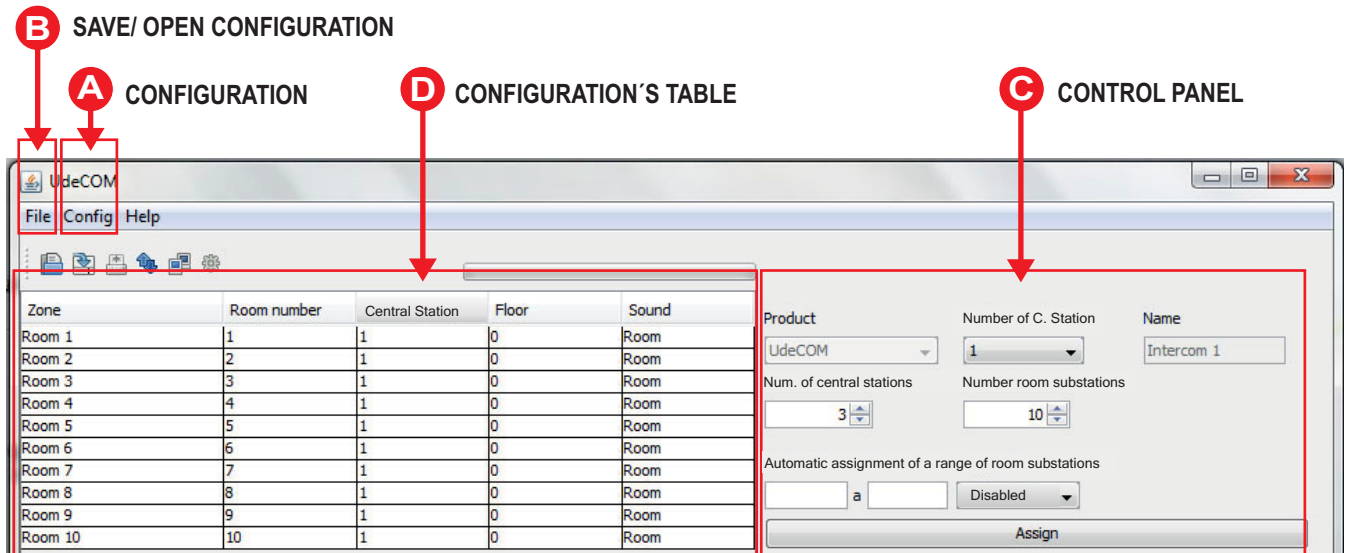
## COMPUTER CONNECTION



If the computer doesn't include a SUB-D9 connector at the COM port to connect the provided cable, a USB-RS-232 adapter should be used. This adapter shall function in Full Duplex mode. ( For example: ATEN UC-232A). **ADAPTER PROVIDED**

## UDECOM SYSTEM CONFIGURATION

Once the computer is connected to the UC-102 central station, run the **UDEConfUC102.jar** file to start **UdeConfUC102** and the following screen will appear.



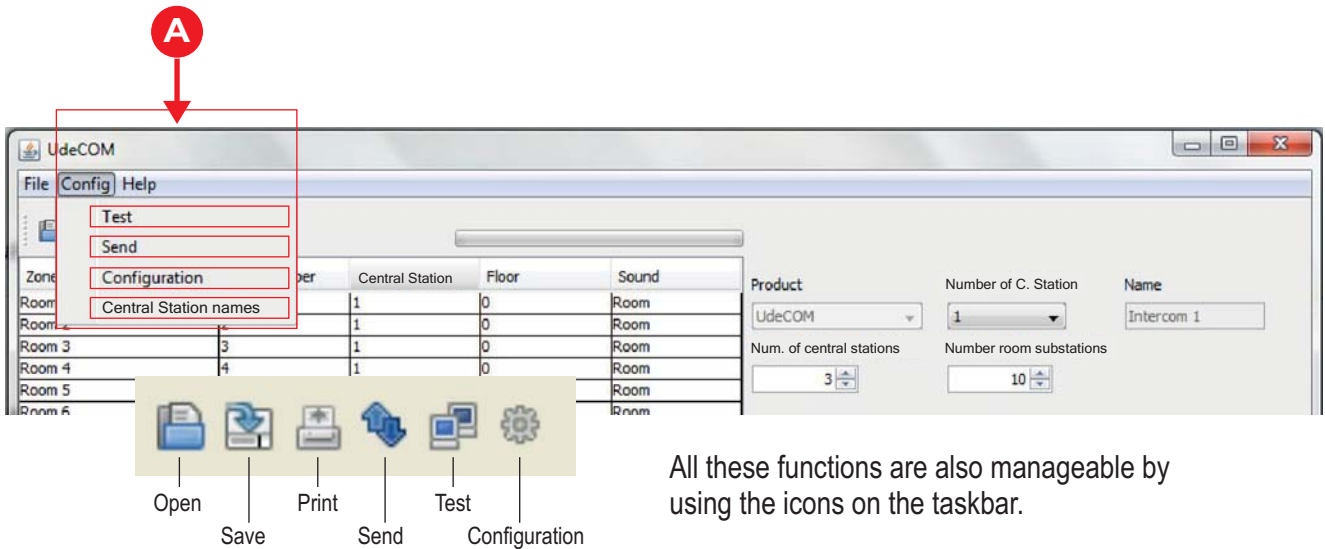
To configure the system, apply the following necessary steps:

1. **Number of room substations.** Use the control panel to choose the total number of room substations.
2. **Number of central stations.** Use the control panel to choose the total number of central stations.
3. Assign a range of room substations to each central station ( possible **automatic** assignment).
4. Modify the table cells according to the installation's features.
5. Connect the RS-232 cable to the UW-102 connection module of the central station which is being configured. Check the UW-102 module's configuration ( See J15-J16,SW1,SW2,SW3).
6. **Central station.** Use the control panel to choose the central station number ID to which we are connecting to (In this case is number 1).
7. The configuration is done from the Menu: Config > Send
8. If there are more central stations connected to the system repeat steps 5,6 and 7 for each one of them. Make sure you change the number ID and the RS-232 cable connection each time.
9. In order to save the configuration, go to Menu: File > Save

To modify the text in a box, double click on it. The following keys can be used:  
 Ctrl+C = **copy**. Ctrl+V = **paste**. Ctrl+X = **cut**. Ctrl+Y = **redo**. Ctrl+Z = **undo**.  
 Once the text is modified, click on the ENTER key. ↵

**UDECOM SYSTEM CONFIGURATION**

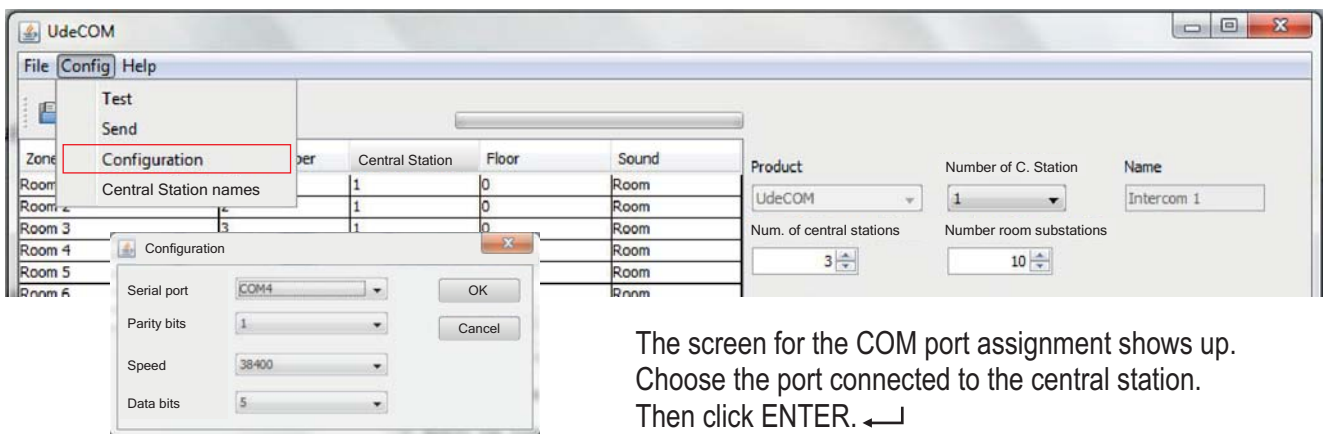
**A CONFIGURATION**



All these functions are also manageable by using the icons on the taskbar.

**A1- Configuration Tab**

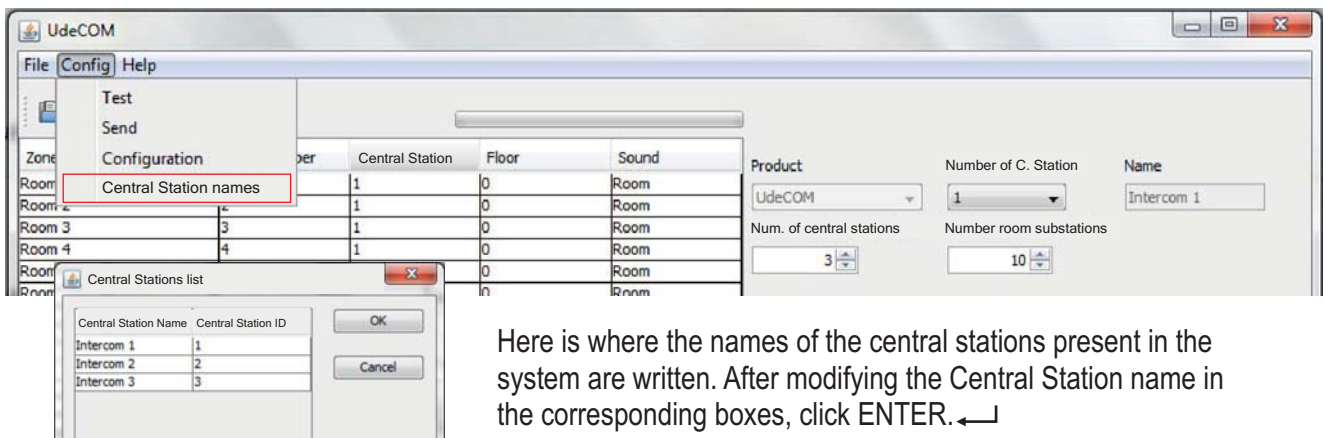
- Configuration



The screen for the COM port assignment shows up. Choose the port connected to the central station. Then click ENTER. ↵

**A2- Configuration Tab**

- Central stations names



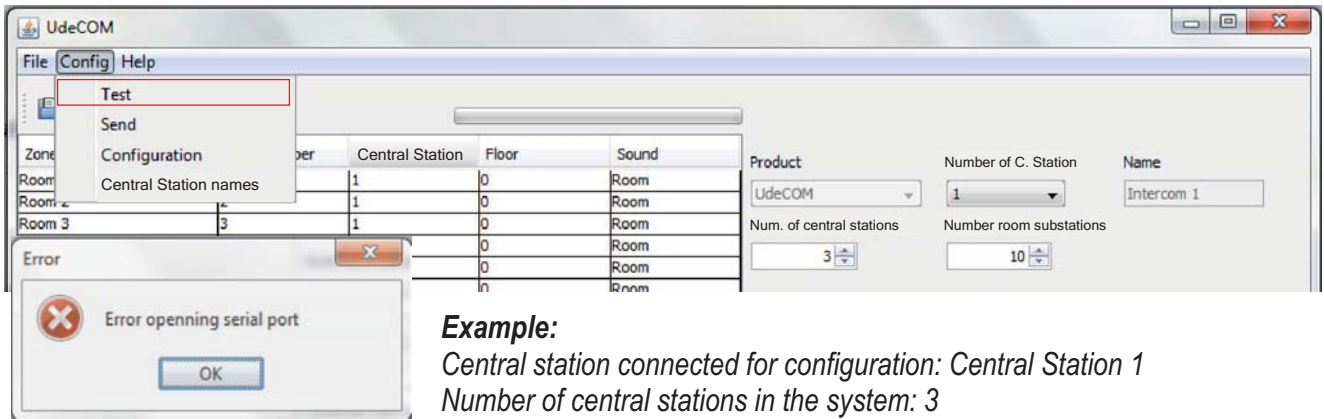
Here is where the names of the central stations present in the system are written. After modifying the Central Station name in the corresponding boxes, click ENTER. ↵

**UDECOM SYSTEM CONFIGURATION**

**A CONFIGURATION**

**A3- Configuration Tab**

- Test



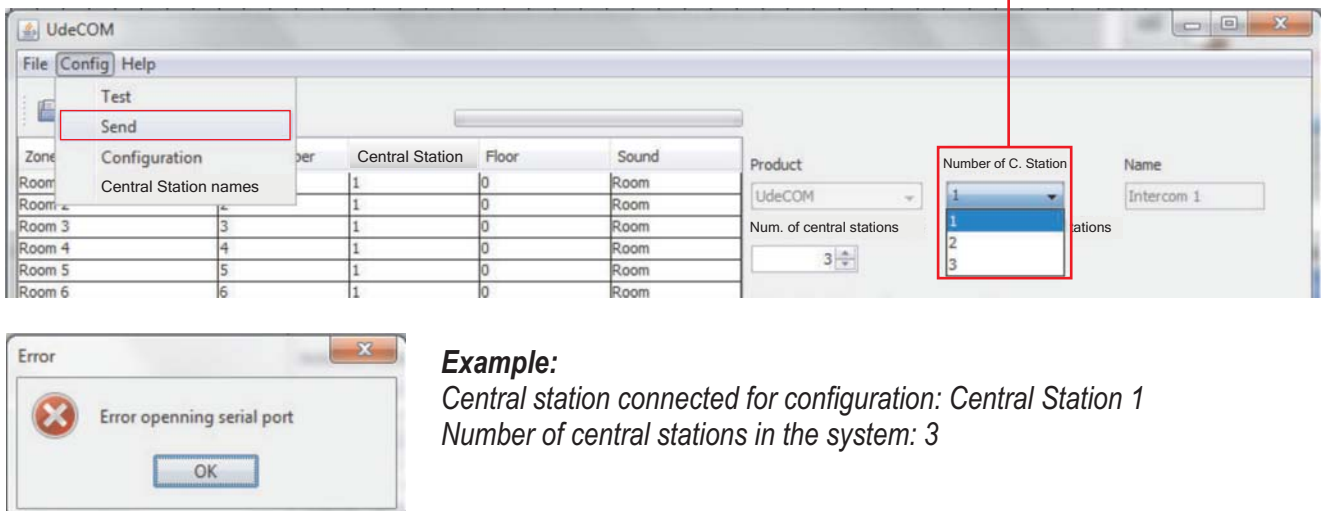
**Example:**  
 Central station connected for configuration: Central Station 1  
 Number of central stations in the system: 3

If the central station is correctly connected to the system, an OK message will appear.  
 If there is no communication with the central station, a message will appear seconds later saying: **“Error opening serial port”**.  
 In this case, go back to **Configuration (A1)** and choose another COM port and repeat **Test (A3)** until the connection is fully established.  
 Then connect the central stations (2 and 3), choose its ID (2 or 3) and proceed with the configuration by repeating steps **A3** and **A4** for each one of them.

**A4- Configuration Tab**

- Send

Central station ID



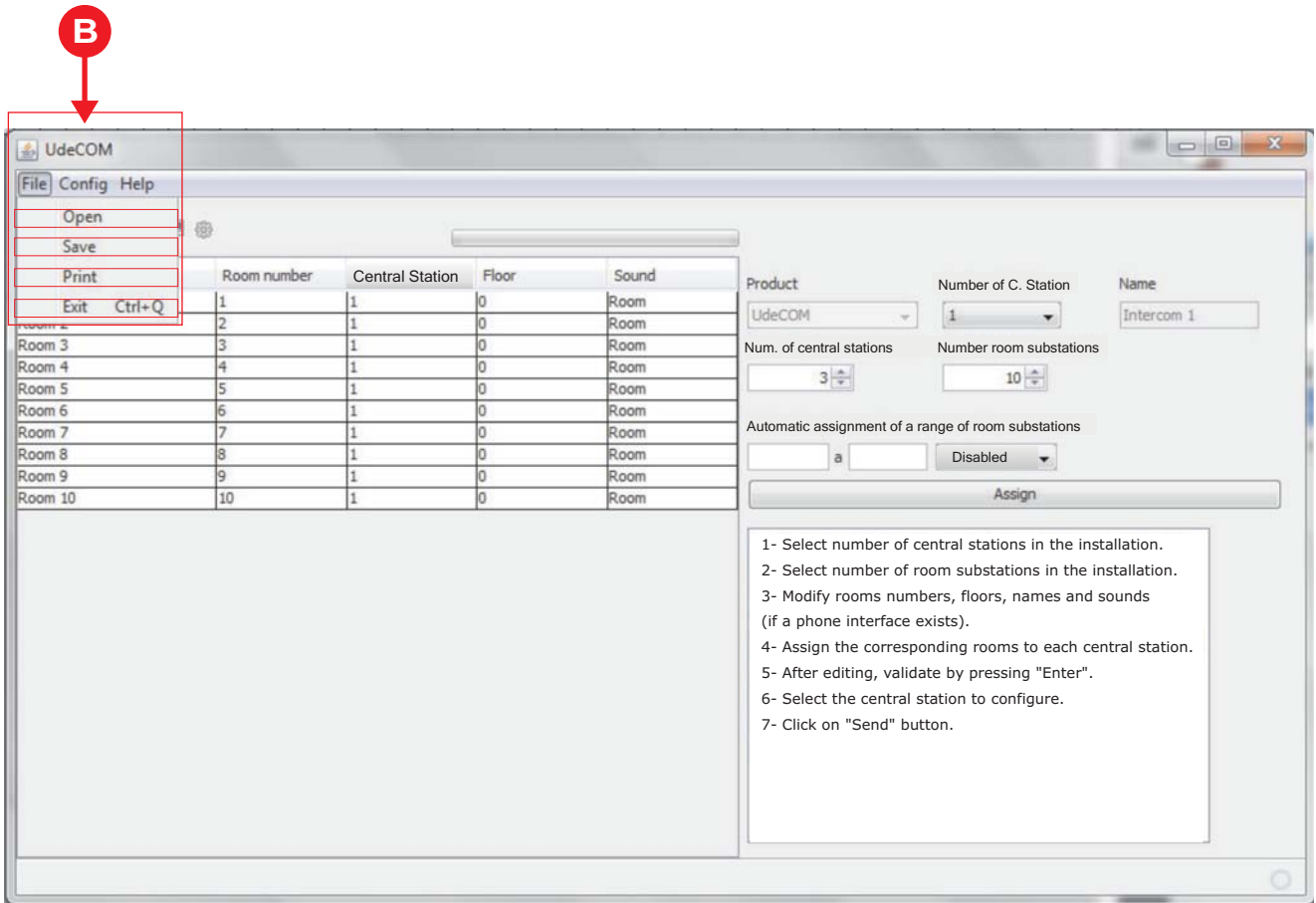
**Example:**  
 Central station connected for configuration: Central Station 1  
 Number of central stations in the system: 3

Sends the configuration to the selected central station.  
 If the configuration was successfully sent, the message OK will appear.  
 If the configuration fails to be sent, a message will appear seconds later saying: **“Error opening serial port”**.  
 Check the connection and repeat operation **Test (A3)**.

Then connect the central stations (2 and 3), choose its ID (2 or 3) and proceed with the configuration by repeating steps **A3** and **A4** for one of them.

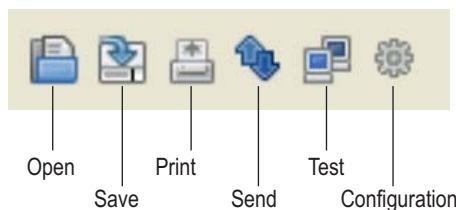
**UDECOM SYSTEM CONFIGURATION**

**B OPEN / SAVE / PRINT CONFIGURATION**



In the File menu, the following options will appear:

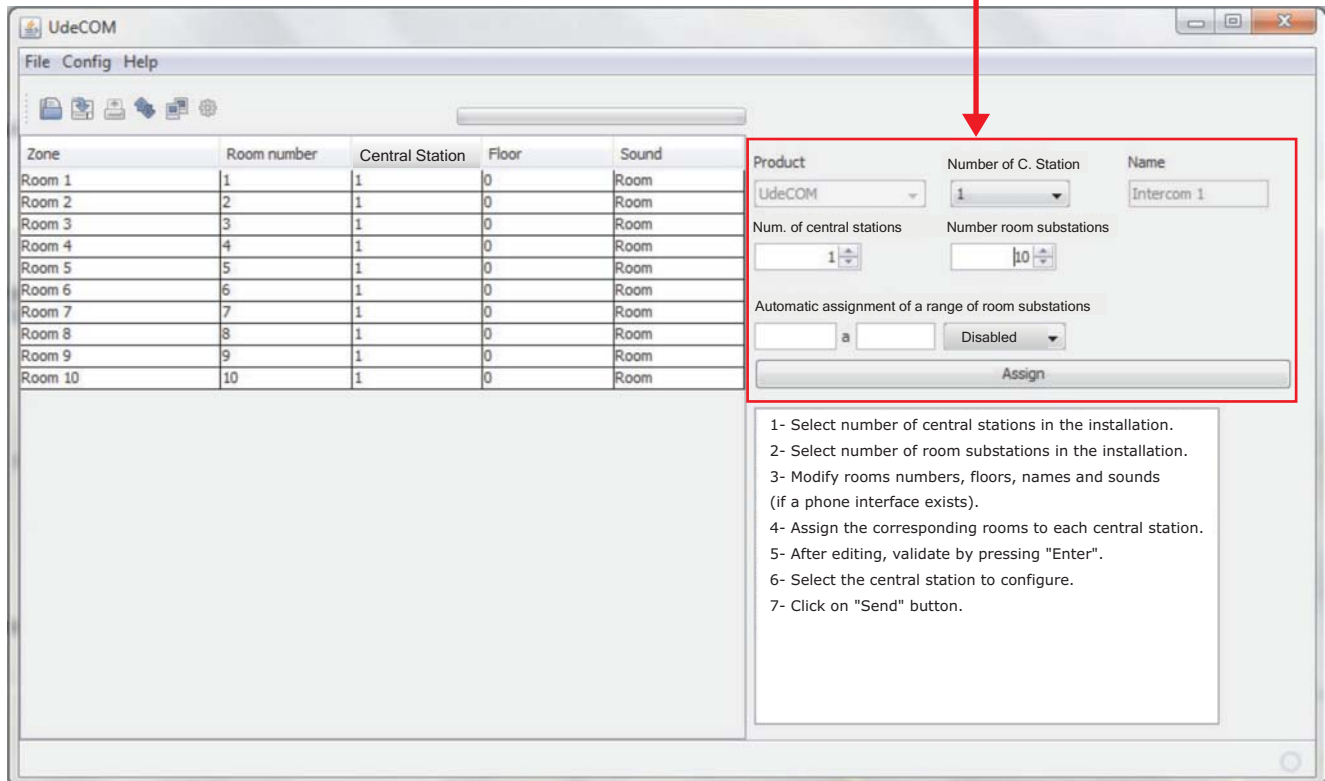
- Open** : Recovers a configuration previously saved.
- Save** : Saves the current configuration.
- Print** : Prints the configuration's table.
- Exit** : Closes the UDEconf UC102 program.



## UDECOM SYSTEM CONFIGURATION

C

### CONTROL PANEL

C


**Central Station:** Select the ID number of the central station which is going to be configured.

**Name:** Sets the text that will appear on the central station's display. To modify this text, go to Config > Central station names and change the names of the different central stations.

**Number of central stations:** total number of central stations in the system.

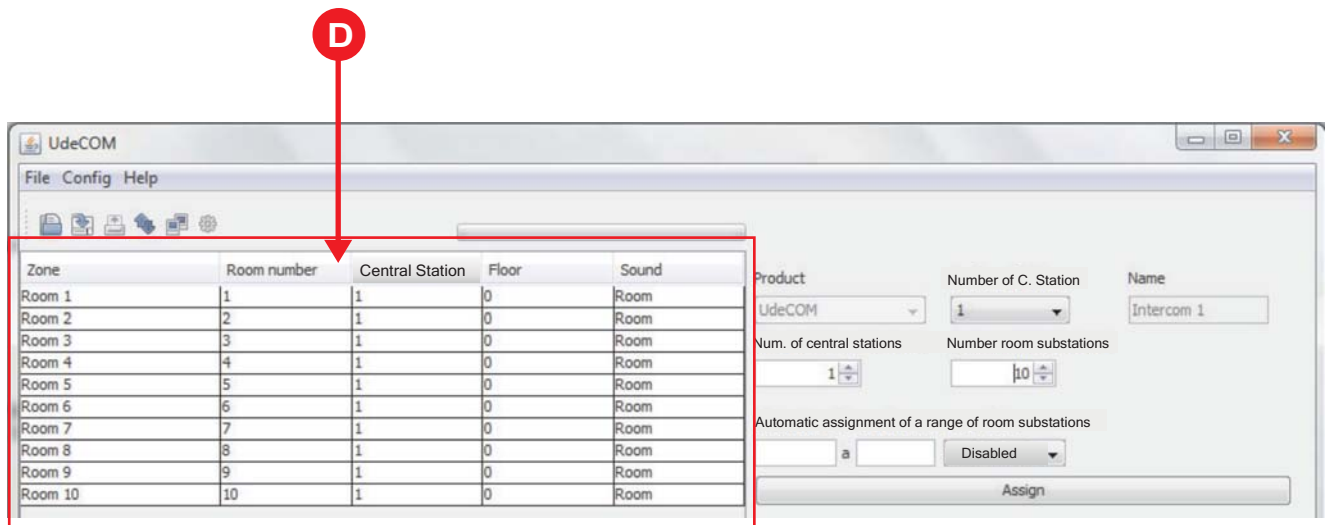
**Number of room substations:** total number of room substations in the system.

**Automatic assignment of a range of room substations:** optional function to assign central stations to different range of zones in a comfortable way. By introducing the range and the central station, the table will be set without doing it zone by zone.

## UDECOM SYSTEM CONFIGURATION

### D

### ROOMS CONFIGURATION



**Zone:** name of the room/zone (Max. of 19 characters).

**Room number:** ID number of the UC-104 or UC-140 substitution.

Note: This number, denominated as "extension", identifies the room/zone and cannot be repeated. This number will appear on the central station's display when a call is received ( as well as the room's name). However, it is the extension number the one that will be indicated in a spoken message on the phone if the UDECOM system includes a UW-18 telephone interface.

**Central station:** station with a room/zone assigned. Editable.

**Floor:** floor assigned to a room/zone.

**Sound:** message for every type of room/zone that will be played on the telephone if the UW-18 is used. Select the box in particular and choose among the following options:

- Room
- Rehabilitation room
- Independent bathroom substitution
- Nurse room
- Office
- Cafeteria
- Zone
- Door
- Hall

To modify the text in a box, double click on it. The following keys can be used:  
 Ctrl+C = **copy**. Ctrl+V = **paste**. Ctrl+X = **cut**. Ctrl+Y = **redo**. Ctrl+Z = **undo**.

Once the text is modified, click on the ENTER key. ←