

GD-37 Installation, configuration and user manual



Índice

1. Description	3
2. Front and rear panel	3
3. Technical characteristics	4
4. Start-up procedure	5
5. Basic operation	5
5.1. Digital audio storage	5
5.2. Front keys	6
5.3. Operating indicator lights	6
5.4. Functions management	7
5.5. Ethernet configuration	7
5.5.1. RJ-45 Patch Cable	7
5.5.2. RJ-45 Crossover Cable	7
6. Webserver	8
6.1. System Status	9
6.1.1. Display GD-37	9
6.1.2. Player control	10
6.1.3. Time to next calendar event	10
6.1.4. Music list	10
6.1.5. Message list	10
6.1.6. Program list	10
6.1.7. Outputs	10
6.1.8. Inputs	10
6.1.9. Others	10
6.1.10. Power	10
6.2. System network	11
6.3. System time / date	12
6.3.1. Date and hour	12
6.3.2. Summer time	12
6.3.3. RTCC	12
6.3.4. General volume	13
6.3.5. Language	13
6.4. Calendar events	13
6.4.1. Once	14
6.4.2. Daily	14
6.4.3. Weekly	14
6.4.4. MON - FRI	14
6.4.5. Weekend	14
6.4.6. Direct play	15
6.4.7. Days	15
6.4.8. Date to date	15
6.5. Remote Events	15
6.5.1. Activation mode	16
6.5.2. Priority mode	16
6.6. Change password	16
6.7. Restore to default	17
6.8. Supervisor Menu	17
6.8.1. Inhibition input remote control	17
6.8.2. Messages supervisor	18
7. FTP Server	18
8. ANNEX 1. Advanced date	20
8. ANNEX 2. Delayed date	21

1. Description

The GD-37 is a programmable and manageable pre-recorded messages and background music player over Ethernet via a built-in webserver.

Suitable for commercial uses as well as for security sound systems in venues with large numbers of people, where the broadcast of automatic, emergency and evacuation notices (among others) is required.

The GD-37 digital recorder allows you to digitally record and play an unlimited number of and background music (depending on the capacity of the SD).

From the front USB it also allows the broadcast of background music (BGM), having 2 play / pause and stop buttons on the front panel.

Scheduled playback of messages via webserver through an internal calendar creating a series of events called "Programs" in which the characteristics associated with the message are registered as per: Start Time, End Time, Cadence, Repetition, Activation of remote control outputs, etc.

The Webserver installed in the equipment allows functionalities such as: complete supervision of operation, activation/stop of messages, music and programmes, programming, calendar events, programming of remote events (remote controls), configuration of operating parameters (day and time, volume, IP-Ethernet mode, on/off, etc.).

It includes 10 programmable GPIs to associate with events or programs and launch messages automatically. It also has 10 GPOs to associate with external equipment such as UDE amplifiers to trigger warning priorities or interact with the building control system, etc.

The GD-37 incorporates two supervised security messages, which in case of failure the equipment indicates it visually via a Fault indicator on the front, at the same time as it closes a fault contact on therear, which can be integrated in other control and signalling equipment.

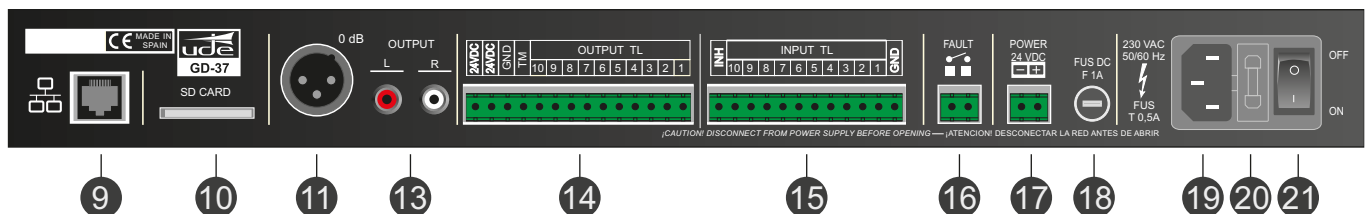
The power supply redundant to 230Vac (others on request) and 24Vdc, allowing it to remain operational even during power cut-offs in the main power supply system.

2. Rear and Front Panel



1. STANDBY / ON indicator
2. FAULT indicator
3. MUSIC on broadcast Indicator
4. MESSAGE on broadcast indicator

5. Headphones
6. USB connector for music playback
7. Music PLAY / PAUSE
8. Music STOP



9. ETHERNET Connector (RJ-45)
10. SD CARD slot
11. XLR Connector - 0dB Output signal.
13. RCA Connector - STEREO Output signal
14. Output remote controls (GPO) and auxiliary power supply output (24 Vdc) max. 100mA
15. Input remote controls (GPI)

16. FAULT contact
17. 24Vdc power supply input
18. DC Fuse (T1A)
19. 230Vac power supply input
20. AC Fuse(T0,5A)
21. ON / OFF Switch

3. Technical characteristics

Output signal	0dBu (0,8Vrms/600 Ω)
Output type	XLR (Balanced: MONO), RCA (L,R: STEREO)
Number of announcements	unlimited (100 pre-programmed max.)
Number of programs (Calendar)	100
Number of tracks	Unlimited (the duration depends on the capacity of the SD card or USB device.)
Clock and Calendar Support Power Supply	Lithium battery 3V CR2025 (Non-rechargeable)
Supported files	<ul style="list-style-type: none"> • Voice: WAV (PCM/ADPCM/OGG) • Music: MP3.
Audio format (player)	<p>Mp3 Files: MPEG 1.0 Sample rate (Hz): 48.000, 44.100, 32.000 Bitrate (kbit/s): 32, 40, 48, 56, 64, 80, 96, 112, 128, 160, 192, 224, 256, 320. MPEG 2.0 Sample rate (Hz): 24.000, 22.050, 16.000 Bitrate (kbit/s): 32, 40, 48, 56, 64, 80, 96, 112, 128, 160, 192, 224, 256, 320. MPEG 2.5 Sample rate (Hz): 12.000, 11.025, 8.000 Bitrate (kbit/s): 32, 40, 48, 56, 64, 80, 96, 112, 128, 160, 192, 224, 256, 320. RIFF WAV (1 or 2 channels) Format 0x01: PCM, 8 o 16 bits, Sample rate <= 48.000Hz. Format 0x11: IMA ADPCM, 8 bits, Sample rate <= 48.000Hz Orbis OGG (1 or 2 chanel) Block size: between 64 and 4096 bytes. Quality: 8 y 16 bits. Sample rate <= 48.000Hz. Bit rate <= 500 kbit/s</p>
Maximum Message Recording Duration:	Limited by SDCARD capacity (typically: 66 hours / 1GB card)
Messages activation	Momentary (Push button) or Remote control (Switch)
Activation mode¹	Contacts: Normally Open or Normally Closed
Priority Hierarchy	Geographic (IN1 > IN2 >...> IN10) or Numerical Priority (independent for each input).
Auxiliary outputs²	11 Normally Open or N.O. contacts (TL1 to TL10, TM)
Audio Monitoring Output	Headphones: dim: 3,5 mm, 32 Ω, Front panel
Keys	Shortcuts: 3 functions (PLAY/PAUSE, STOP)
Multimedia Connections	<ul style="list-style-type: none"> • SD Card (Messages and Music): Rear panel • USB 2.0 Type A (Music): Front panel
Multimedia support	<ul style="list-style-type: none"> - SD Card (CAT 10 recommended): 4GB or higher, FAT32 formatted. MicroSDHC type cards are not compatible with GD-37, even if a size adapter is used. - USB Flash Memory: Type 2.0, FAT32 formatted.
Conexión Remota LAN³	<p>Ethernet type, RJ-45 connector (8-pin). IPV4-only support.</p> <ul style="list-style-type: none"> - 10/100 Mbps mode (compatible). - Auto IP (DHCP) or Manual IP

¹ Configurable by Menu, but common option for all external inputs (IN1 to IN10).

² Assignable to any message or activation entry by Menu.

³ Configurable via Menú.

Operations	<p>The following remote functionality is available via the Webserver installed:</p> <ul style="list-style-type: none"> - Complete supervision of the operation. - Activation/Stop of messages, music and programmes. - Programming of Calendar Events. - Programming of remote events (remote controls). - Configuration of operating parameters (day and time, volume, IP-Ethernet mode, on/off ...). <p>Through the FTPServer⁴ installed in the equipment, the remote update function of the audio files (Mp3 and WAV) and the configuration file (SETTINGS.BIN) is available.</p>
Security	4-digit numeric password
FAULT indicator	<p>Luminous: Red light on Front panel (Fault condition)</p> <p>Contact: Normally closed. Opens in case of fault</p>
Supervised messages	2 (100s max. reaction time)
Power Supply	<p>Main: 230Vac (50/60Hz), 1 Amp Fuse.</p> <p>Secondary (buffer): 24Vdc, 1 Amp Fuse.</p>
Auxiliary power supply output	24Vdc / 100mA max
Operation temperature	+5 to +40°C
Storage temperature	-5 to +50°C
Humidity	5% to 95%, without condensation
Dimensions	428 x 57 x 330 mm (1 U)
Weight	4.25 Kg
Color	Black

⁴ The FTPServer installed in the GD-37 requires a standard ftp client that works under command line and that is usually included in the most common operating systems (Windows includes ftp.exe).

4. Start-up procedure

The start-up of the GD-37 is via the start-up switch, which is located on the rear of the GD-37. The start-up switch affects both the 230VAC input and the 24V DC input.

With the equipment switched on, the GD-37 starts a start-up protocol that basically consists of a start-up of the different parts that make up the equipment. This process can last between 20 and 30 seconds, after which the GD-37 will be available for use.

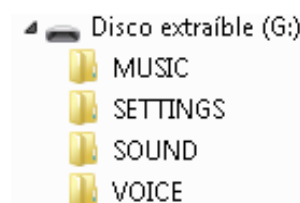
5. Basic operation

GD-37 basically acts as a background music player (BGM), but it allows interrupting the music broadcast to emit a prerecorded warning, message or sound, either activated manually from the Webserver or automatically from a remote control input or programmed through a calendar event.

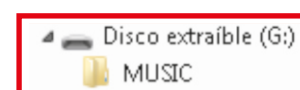
5.1. DIGITAL AUDIO STORAGE

The audio content (music or messages/warnings/sounds) that the equipment plays is by default stored on an SDCARD of type HC (CAT 10 recommended) located in the back of the equipment, previously formatted under the FAT32 system, which is provided with the following directory structure:

- **MUSIC.** Contains the music files or songs in MP3 format.
- **SOUND.** Contiene los archivos de sonidos, alarmas, etc..., en formato WAV.
- **VOICE.** Contiene los archivos de mensajes de voz WAV.
- **SETTINGS.** It is a system folder that should not be modified that includes the settings.bin file, the basis of all the programming and configuration of the equipment.



The front of the GD-37 has a USB 2.0 port that allows music to be broadcast, after connecting a USB flash memory. The USB flash memory must be formatted under the FAT32 file system. The music files to be played must be stored in a folder called "MUSIC" which will be located at the root of the directory structure of the Flash Memory.



Before inserting the flash memory, it is essential to turn off the GD-37, connect the USB memory and restart the GD-37, the content of the memory will be analyzed by the GD-37 and when it detects the music files the GD-37 will select them in order to be able to be reproduced whenever the user wishes.

NOTES:

Do not connect or disconnect the USB memory while the GD-37 is running, irreparable damage may occur to the USB memory or to the GD-37 itself.

Do not connect or disconnect the SD card with the GD-37 running, irreparable damage may occur to the SD card or to the GD-37 itself.

For the correct operation of the GD-37, it is essential that the audio directories on the SD card contain at least one correct file, that is, a ".mp3" file in the "MUSIC" folder, a ".wav" file in the "VOICE" folder and a ".wav" file in the "SOUND" folder.

It is necessary to turn off the GD-37 before inserting a USB memory; When the equipment is turned on again, the memory content will be analyzed and when the GD-37 detects music files, these will be selected to be played whenever the user wishes.

While the GD-37 is playing Music from a USB memory placed on the front of the equipment, the Music content present on the SD card connected on the back will not be available.

The file system used by the GD-37, to save the information in the SDCARD and USB memory units, does not support the name of files of more than 8 characters, so it is required that the name of the files, .WAV, .MP3, and .BIN, be limited to 8 characters as the file name and the typical 3 characters for the extension, plus the separation period. Additionally, the GD-37 supports the use of the ID3 tag related to the song name in all .MP3 files, in order to display long names on the computer screen.

5.2. FRONT KEYS

On the front of the GD-37 there are two direct access keys to music playback (PLAY / PAUSE and STOP). To play the audio files stored in the SD card or in the USB device, it is not necessary to connect the PC to the GD-37. By manipulating the PLAY / PAUSE keys and the STOP key, you can start, pause and stop the playback of the music files on the SD card. In the case of having a USB device connected, the audio files on the USB device will be the ones that can start, pause, and stop playback.

IMPORTANT NOTE:

The PLAY / PAUSE shortcut key affects only the playback of background music, while the STOP key additionally affects externally triggered messages (remote controls), those triggered by calendar events, etc.

5.3. OPERATING INDICATOR LIGHTS

The GD-37 has various indicator lights in the front panel that give us the following information:

1. Stand by / ON

It tells us if the equipment is operational (GREEN) or off (RED).

2. Fault

When lit (RED) indicates general failure condition of the unit or degradation of the audio files supervised (Security installations). This indication implies the opening of the FAULT contact located on the rear side of the GD-37.

3. Music ON

When lit (RED) indicates that the music playback mode is active.

4. Message ON

When lit (RED) indicates that the message playback mode is active.

5.4. GD-37 FUNCTIONS MANAGEMENT

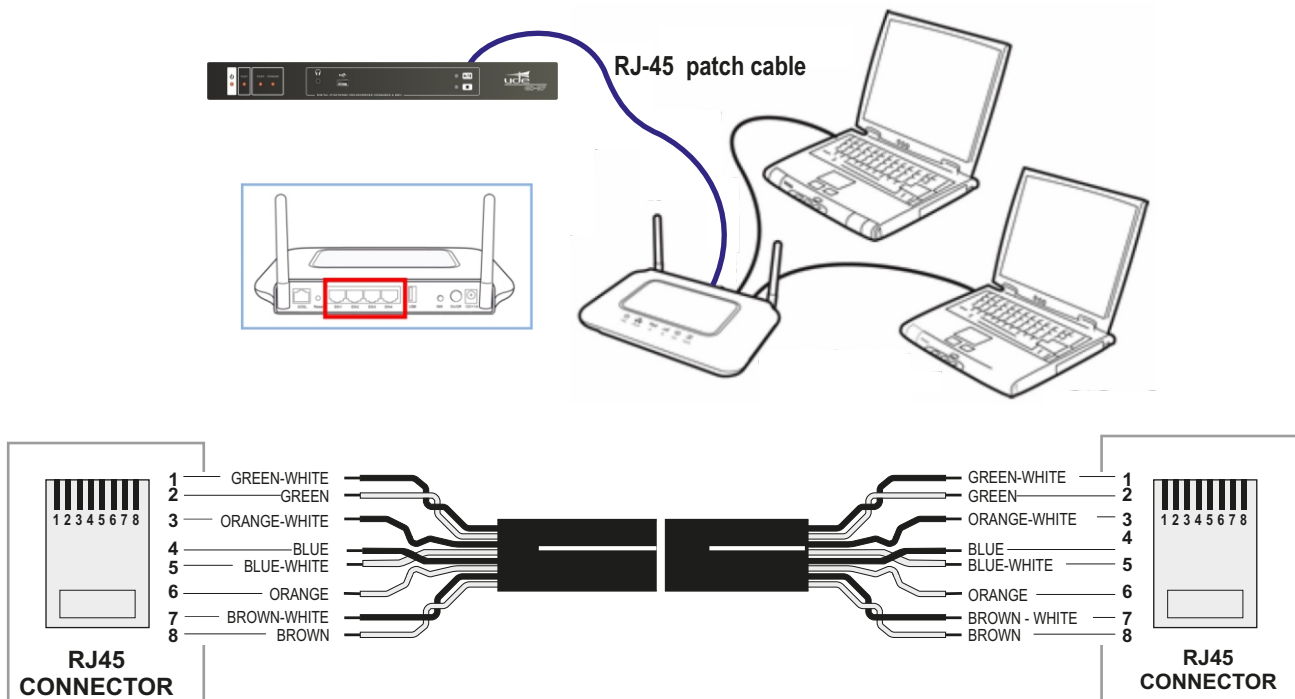
Control, programming, verification, etc. of the GD-37 is carried out by means of a computer accessing the Webserver that the GD-37 itself incorporates.

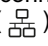
5.5. ETHERNET CONFIGURATION

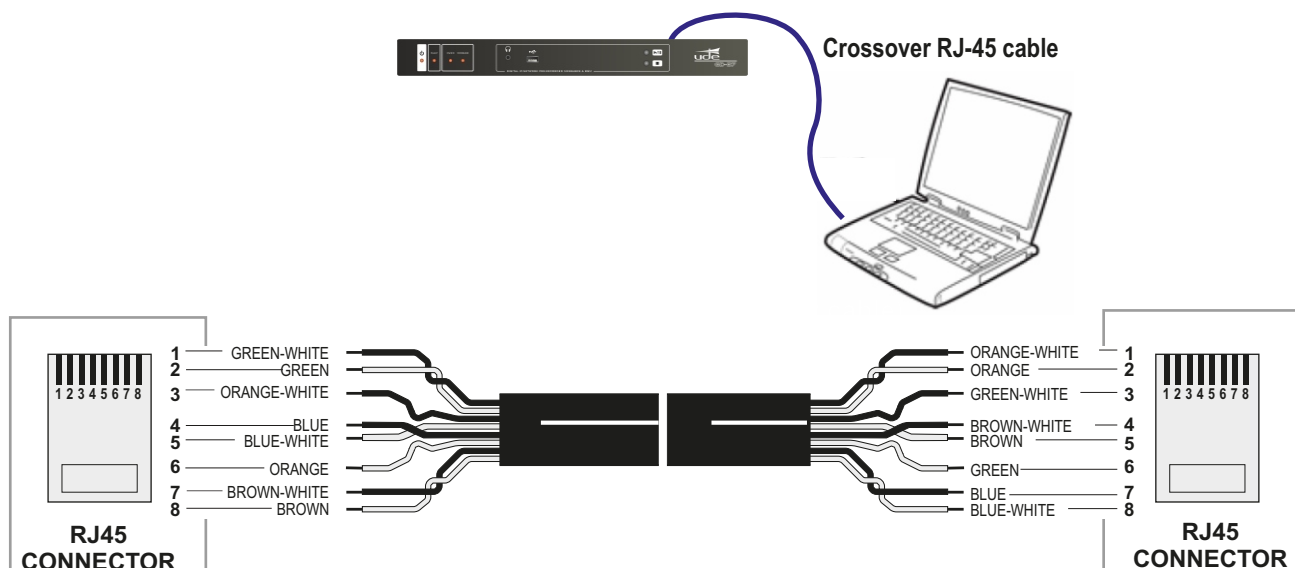
The GD-37 can be connected to a local network using two types of connection:

5.5.1. RJ-45 Cable or "Patch Cable". It is used when the GD-37 joins the local network through a router / switch / hub or an ADSL modem / router, present in the installation and acting as Access Ports (Gateway).

This cable will be connected between the connector (), placed on the GD-37 rear panel, and a free Ethernet port on the router.



5.5.2. Crossed RJ-45 Cable or "Crossover Cable". It is used to connect the GD-37 directly to a computer that has an Ethernet RJ-45 connection from the GD-37 connector marked (). The cable can be shielded, although it is not essential.

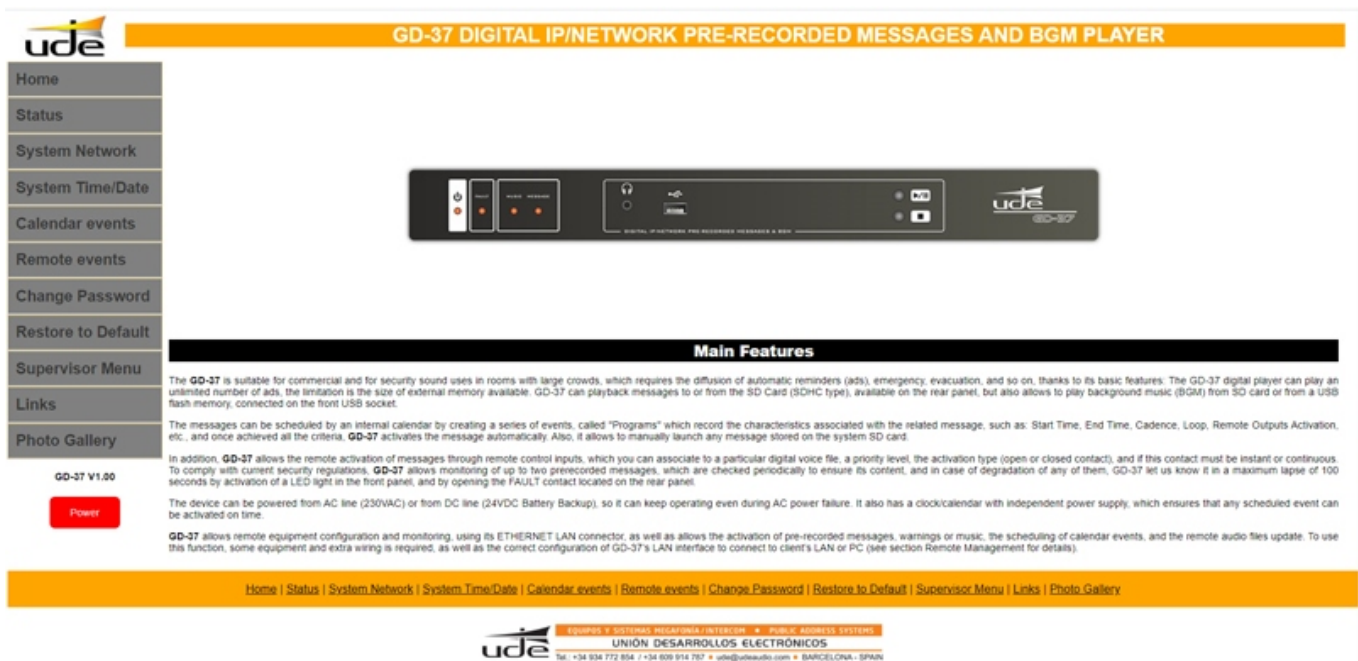


6. Webserver

The computer and the GD-37 are connected in accordance with the provisions of point 5.5 of this manual.

The IP address associated with the GD-37 that is configured at the factory is <http://192.168.0.200>.

To access WEBSERVER, all you have to do is open your computer's web browser and write down `http://gd37` or the IP address associated with your GD-37 device (which by default is `http://192.168.0.200`) in the address bar of your computer. After a few seconds the “HOME” start screen will appear:



NOTAS:

Para que el explorador muestre la aplicación del GD-37, la conexión de red local (Ethernet) ha de estar configurada. Revise este manual para realizar dicha configuración (véase apartado 5.5 Configuración Ethernet). Si duda, contacte con el administrador de su red local. Ha de tener en cuenta de que para poder acceder al GD-37 desde Internet (no necesario para redes locales) hay varias consideraciones importantes a cumplir. Además se requerirá de personal cualificado para realizar algunas tareas:

- Es conveniente contratar un servicio de IP Fija con su proveedor de Internet, para asegurar que el GD-37 se encuentre siempre disponible en la misma dirección **IP EXTERNA**. Si ya dispone de servicio de Internet, pero es del tipo IP Dinámica, será preciso contratar un servicio de **DNS DINÁMICA**. Para más detalles consulte con su administrador de red.
- Se ha de configurar el GD-37 en modo **IP MANUAL**. Consulte con su administrador de la red local para que le facilite una dirección de **IP libre**.
- Se deberán redirigir los puertos externos **TCP** (80, 1998 y 1999) hacia los puertos internos TCP (80, 1998 y 1999) en la dirección **IP** con la que ha configurado previamente en el GD-37. Para realizar esta tarea será necesario contactar con el administrador de su red local.
- El acceso desde teléfonos móviles no está garantizado.
- Dependiendo del tráfico de datos existente en la red local o del ancho de banda contratado, la carga de contenido de datos desde el Webserver en el ordenador remoto puede verse ralentizada.

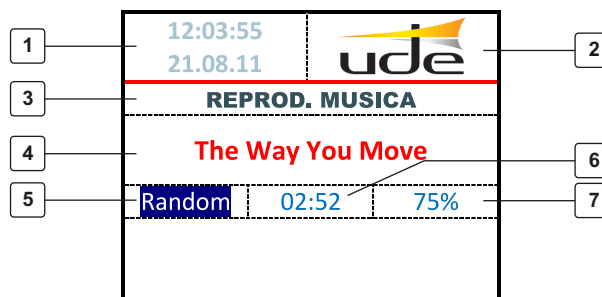
6.1. SYSTEM STATUS

The WEBSERVER has a menu option called "STATUS" which allows you to monitor the status of the GD-37 and, in some aspects, to interact with it:



6.1.1.- Display GD-37

This space provides an overview of some basic aspects of the GD-37's functionality.



1.- Clock/Calendar.

2.- Logo.

3.- Status line.

4.- Song or announcement title

5.- Playback mode

6.- Playback time

7.- Percentage progress.

1. Clock/Calendar.

It always indicates the current time and day. Remember to set it before starting to use any timer function, otherwise malfunctions may occur, and check it regularly.

2. Logo. Logo of UNION DESARROLLOS ELECTRONICOS, S.A.

3. Status line

This line will display information related to the operation of the equipment at any given moment, such as: WAITING..., PAUSE, REPROD. MUSIC, REPROD. MESSAGE, REPROD. SCHEDULE, SUPERVISED, etc.

4. Song or announcement title

This area will display the song title (extracted from the ID3 tag found in most MP3 encoded audio files, if present), or the name of the MP3 or WAV file. If the file or song name is larger than the associated screen area, it will be displayed in scroll or roll mode.

5. Playback mode

The active music playback mode is always repetitive, but there are two possibilities: NORMAL or RANDOM.

The NORMAL playback mode consists of a sequential playback of the songs stored in the "MUSIC" directory of the SD card and/or USB device, while in the RANDOM mode the GD-37 will play the songs in random order, with the aim of not repeating songs.

6. Playback time

This area will display the playing time of the current song or message in the reduced format of minutes and seconds (mm:ss).

7. Percentage progress

This area will display the % played of the current song or message.

6.1.2.-Player Control

In this section it is possible to start, in the GD-37, the music playback by pressing the **"PLAY"** button, skip to the next track by pressing the **"NEXT"** button, select random or normal playback by using the **"RANDOM"** button and stop music playback by pressing the **"STOP"** button.

NOTES: The "STOP" button in this space is also effective to stop any other playback in progress on the GD-37

To broadcast a new song, a new message or run a programme, it is an essential condition to stop the current playback by pressing the "STOP" stop key and then press the "PLAY" button of the area associated to the desired operation.

6.1.3.- Time to next calendar event

It indicates the time remaining to activate the broadcast of the next scheduled event.

6.1.4.- Music list

The music playback is always repetitive, although the song selection can be set as random **"RANDOM"** or sequential **"NORMAL"**. It is possible to switch between the two playback modes by pressing the **"RANDOM"** button on the player. To select the next song, simply press the **"NEXT"** button. To select a song from the available songs, press **"DOWN"** or **"UP"** in the **"MUSIC LIST"** section, when the title of the song is the desired one, press the **"PLAY TRACK"** button. On screen 6.1.1 the title of the selected song appears, the player mode changes to **"REPROD.MUSIC"** and the playback progress bar, the playback time and the % progress in relation to the total of the song are updated. It is possible to stop music playback by pressing the **"STOP"** button in the **"PLAYER CONTROL"** section 6.1.2.

6.1.5.- Message list

Once a message has been selected by **"UP"** and **"DOWN"** from the list of voice messages or sounds, it will be activated by pressing the **"PLAY MESSAGE"** button. The message will start playing and will stop playing at the end of the message. During the time the message is playing, the status screen will show the **"PLAY MESSAGE"** mode, the name of the audio file, the progress bar and its respective percentage (%), as well as the playing time of the message. It is possible to stop the message playback by pressing the **"STOP"** button of the **"PLAYER CONTROL"** section. 6.1.2.

6.1.6.- Program List

The user can select any program (from program 00 to program 99) that has been previously configured, using the **"UP"** and **"DOWN"** buttons in the **"PROGRAM LIST"** area. The list shows the selected programme number and the total number of programmes stored in memory. Once the desired programme has been selected, it will be activated after pressing the **"PLAY PROGRAM"** button. Programmes that have the special **"DIRECTPLAY"** mode (which does not have an associated time event) can only be run manually from this list. During the time the programme is active, the status display will show the **"SCHEDULE"** mode and the name of the programme being broadcast. It is possible to stop the message playback by pressing the **"STOP"** button in the **"PLAYER CONTROL"** space 6.1.2.

6.1.7.- Outputs

By means of simulated LED indicators, it indicates the status of the 10 output remote controls and the general remote control of the GD-37. The illuminated LED indicates active remote control, the LED off indicates remote control at rest.

6.1.8.- Inputs

By using simulated LED indicators, it indicates the status of the 10 output remote controls and the general remote control of the GD-37. The illuminated LED indicates active remote control, the LED off indicates remote control at rest.

6.1.9.- Others

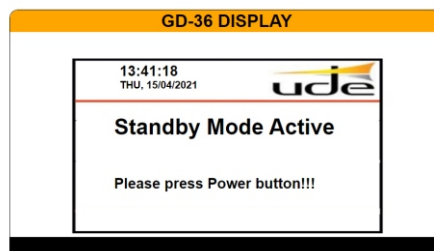
It simulates the LED indicators located on the front of the GD-37: FAULT, MESSAGE and MUSIC, having the same functionality.

6.1.10.- Power (ON/OFF)

The GD-37 has been designed for continuous operation, however, in certain circumstances it may be necessary to switch it off. The GD-37 can be switched off (standby) and on remotely using the **"POWER"** button.



When the equipment is in standby mode, the **STANDBY** LED on the front panel of the GD-37 will illuminate red and the remote display will appear:



6.2. SYSTEM NETWORK

Esta página permite la configuración de la interfaz de red del GD-37.

GD-37 DIGITAL IP/NETWORK PRE-RECORDED MESSAGES AND BGM PLAYER

Settings: Network

This page allows the configuration of the NETWORK's board settings. Enter the new settings for the board below.
CAUTION: Incorrect settings may cause the board to lose network connectivity. If you have doubts about parameters, please don't hesitate to contact with the Network Admin.

NETWORK

ETHERNET
HOST NAME
MAC ADDRESS
DEVICE IP
MASK IP
GATEWAY IP
MAIN DNS IP
SECONDARY DNS IP

STATIC/MANUAL
GD37
04:91:02:36:95:02
192.168.0.235
255.255.255.0
192.168.0.100
8.8.8.8
1.1.1.1

Save Network

GD-37 V1.00

Power

Home | Status | System Network | System Time/Date | Calendar events | Remote events | Change Password | Restore to Default | Supervisor Menu | Links | Photo Gallery

ude
EQUIPOS Y SISTEMAS MECANICA-INTERCOM • PUBLIC ADDRESS SYSTEMS
UNION DESARROLLOS ELECTRONICOS
Tel.: +34 934 772 254 / +34 934 914 787 • ude@udeaudio.com • BARCELONA - SPAIN

When the GD-37 is connected to a router (Gateway), the default configuration of the Local Network (IP) should be AUTO. This configuration is based on the automatic network address assignment, following the standard DHCP protocol, every time a new element wants to connect to the network. This is the easy configuration mode (valid for most installations) and does not require to consult with your local network administrator.

In complex installations, the network administrator may require the use of specific IP addresses, called fixed addresses, for each of the devices that want to connect to the network. In this case, the GD-37 must be configured in **"MANUAL"** mode.

The **"MANUAL"** mode must also be used when you wish to connect the GD-37 directly to a computer using a "Crossover Type" cable (See section 5.5 Ethernet Configuration).

When the manual mode is selected, you must specify the rest of the parameters and press the **"SAVE NETWORK"** button to save; if you do not have enough information, it is recommended to contact your local network administrator to provide them (See section 5.5 Ethernet Configuration).

Don't forget to press the **"SAVE NETWORK"** button to save the changes you have made. The changes will take effect the next time the GD-37 is started up.

CAUTION: Incorrect settings may cause the GD-37 to lose network connectivity. If you are in doubt about the settings, do not hesitate to contact your network administrator.

6.3.- SYSTEM TIME/DATE

6.3.1 Date and time

This section allows you to enter, modify and update the time and date data:

TIME AND DATE	
HOUR (hh)	<input type="text" value="18"/>
MINUTE (mm)	<input type="text" value="45"/>
SECONDS (ss)	<input type="text" value="39"/>
MONTH (mm)	<input type="text" value="04"/>
DAY (dd)	<input type="text" value="08"/>
YEAR (yy)	<input type="text" value="21"/>
<input type="button" value="Save Time/Date"/>	

The clock/calendar must be reset on some occasions, e.g. when it is first put into service or after changing the lithium battery that powers it and keeps it on time when the main and secondary power supply fails.

It is essential that, once the desired date and time parameters have been updated, the **"SAVE TIME/DATA"** button is pressed to update the internal data of the GD-37.

6.3.2 Summer time

It is possible to set the automatic time change setting mode according to summer/winter time.

SUMMERTIME	
SETUP	<input type="text" value="AUTO 2AM - 3PM"/>
START MONTH (mm)	<input type="text" value="03"/>
START DAY (dd)	<input type="text" value="28"/>
START HOUR (dd)	<input type="text" value="02"/>
END MONTH (mm)	<input type="text" value="10"/>
END DAY (dd)	<input type="text" value="31"/>
END HOUR (dd)	<input type="text" value="03"/>
<input type="button" value="Save Summertime"/>	

This time adjustment takes place in Spain and in most European countries, at 02:00 on the last Sunday in March, when the clock is set forward one hour (02:00 becomes 03:00) and on the last Sunday in October, the operation is carried out in reverse, setting the clock back one hour (03:00 becomes 02:00). To activate this function, simply select the **"AUTO 2AM-3AM"** option in the **"SETUP"** drop-down panel.

There are other time change options that depend on the country where the GD-37 is installed. If this is your case, select **"AUTO OTHERS"** in the drop-down menu and fill in the different sections of the date and time designation in which the changes are to be made. Once the desired time parameters have been updated, it is essential to press the **"SAVE SUMMERTIME"** button to update the internal data of the GD-37.

6.3.3 RTCC

GD-37 microcontroller time deviation correction:

RTCC XTAL ADJUSTMENT	
RTCC Value -127 to +127 (Default: +000)	<input type="text" value="+000"/>
<input type="button" value="Save RTCC"/>	

Systems that use microcontrollers to manage internal clocks usually have a small time deviation.

In the GD-37 it is possible to correct the possible time deviation of its controller. To do this, using a reliable standard, the amount of the deviation must be calculated. If the result is that the GD-37 clock is ahead, consulting the table in annex 1, the value obtained, preceded by the + symbol, shall be entered in the RTCC correction box in this section. If the result is that the GD-37 clock is slowed down, referring to the table in Annex 2, the value obtained, preceded by the symbol -, shall be entered in the RTCC correction box of this section.

It is essential that, once the desired time deviation correction parameters have been updated, the **"SAVE RTCC"** button is pressed to update the internal data of the GD-37.

6.3.4 General Volume

Allows adjustment of the overall audio output level between 064, which is the minimum, up to a maximum of 128.

GENERAL VOLUME

Volume Level 064 to 128 (Default: 100)

100

Save Volume

It is essential that, once the desired volume parameters have been updated, the **"SAVE VOLUME"** button is pressed to update the internal data of the GD-37.

6.3.5 Language

Allows you to select the language of the information displayed on the **"DISPLAY GD-37"** that appears in the **"STATUS"** section of the Web Server itself. It has three options, English, French and Spanish.

LANGUAGE

Language (English/Français/Español)

ESPAÑOL

Save Language

It is essential that, once the desired language parameters have been updated, the **"SAVE LANGUAGE"** button is pressed to update the internal data of the GD-37.

6.4 CALENDAR EVENTS

The complete calendar events configuration screen can be seen below; depending on the activation mode selected, some or all of the boxes/zones will disappear.

MODE CONFIGURATION

Program Number

0

Message File

ESP608C_001.WAV

Activation Mode

ON/OFF

UPDOWNUPDOWN

SAVE CHANGES

START TIME

Hour

11

Minute

54

STOP TIME

Hour

11

Minute

00

REPEAT PERIOD (5 minutes Lapse)

Minutes

000

UPDOWN

ACTIVE OUTPUTS

OUT1

OUT2

OUT3

OUT4

OUT5

OUT6

OUT7

OUT8

OUT9

OUT10

The GD-37 supports the management of up to 100 different programmes, based on events linked to the calendar. For each programme, it is possible to control which auxiliary outputs will be activated during playback of the message associated with the programme in question, when the message will be activated automatically and at what rate it will be repeated in 5-minute intervals.

It is worth mentioning that a programme number **"PROGRAM"**, an audio file **"MESSAGE FILE"** must always be specified, using the **"UP"** and **"DOWN"** buttons located to the right of each of the elements and an activation mode **"ACTIVATION MODE"**, by means of the corresponding drop-down menu. The rest of the parameters are optional. The different activation modes are detailed on the following page:

6.4.1 Once

This programming mode allows you to specify a specific (single) date but at the same time a time range starting at "**START TIME**" and ending at "**STOP TIME**", being able to repeat the message with the interval marked by "**REPEAT PERIOD**" (in multiples of 5 minutes).

In addition, you can select the output remote controls that will be activated when this message is activated. To select an output, press on the "**OUT**" label of the output to be activated and the corresponding indication will light up. Any combination of outputs can be activated.

Remember that after modifying parameters that have an associated "**SAVE CHANGES**" button, this button must be pressed to make the changes effective in the GD-37.

6.4.2 Daily

With this programming mode, the selected audio message will be broadcast every day in the time slot starting at "**START TIME**" and ending at "**STOP TIME**", and may include repetitions of the message with the interval marked by "**REPEAT PERIOD**" (in multiples of 5 minutes).

Additionally, you can select the output remote controls that will be activated when this message is activated. To select an output, press on the "**OUT**" label of the output to be activated and the corresponding indication will light up. Any combination of outputs can be activated.

Remember that after modifying parameters that have an associated "**SAVE CHANGES**" button, this button must be pressed to make the changes effective in the GD-37.

6.4.3 Weekly

With this programming mode, the selected audio message will be broadcast only on the day selected in "**START DATE**", in the time slot starting at "**START TIME**" and ending at "**STOP TIME**", being able to include repetitions of the message with the interval marked by "**REPEAT PERIOD**" (in multiples of 5 minutes). To set a day of the week, click on the text of the desired day and the associated indicator light will illuminate.

Additionally, you can select the output remote controls that will be activated when this message is activated. To select an output, press on the "**OUT**" label of the output you wish to activate and the corresponding indication will light up. Any combination of outputs can be activated.

Remember that after modifying parameters that have an associated "**SAVE CHANGES**" button, this button must be pressed to make the changes effective in the GD-37.

6.4.4 MON-FRI

With this programming mode, the selected audio message will be broadcast only from Monday to Friday, in the time slot starting at "**START TIME**" and ending at "**STOP TIME**", and may include repetitions of the message with the interval marked by "**REPEAT PERIOD**" (in multiples of 5 minutes).

Additionally, you can select the output remote controls that will be activated when this message is activated. To select an output, press on the "**OUT**" label of the output you wish to activate and the corresponding indication will light up. Any combination of outputs can be activated.

Remember that after modifying parameters that have an associated "**SAVE CHANGES**" button, this button must be pressed to make the changes effective in the GD-37.

6.4.5 Weekends

With this programming mode, the selected audio message will be broadcast only on Saturday and Sunday, in the time slot starting at "**START TIME**" and ending at "**STOP TIME**", and may include repetitions of the message with the interval marked by "**REPEAT PERIOD**" (in multiples of 5 minutes).

Additionally, you can select the output remote controls that will be activated when this message is activated. To select an output, press on the "**OUT**" label of the output you wish to activate and the corresponding indication will light up. Any combination of outputs can be activated.

Remember that after modifying parameters that have an associated "**SAVE CHANGES**" button, this button must be pressed to make the changes effective in the GD-37.

6.4.6 Directplay

This mode is special and allows a programme number to be linked to a voice file, without the need to specify an actual calendar event (day and time of activation).

This programme will appear in the programme list and can only be executed from the programme list manually.

Additionally, you can select the output remote controls that will be activated when this message is triggered. To select an output, press on the "OUT" label of the output to be activated and the corresponding indication will light up. Any combination of outputs can be activated.

Remember that after modifying parameters that have an associated "SAVE CHANGES" button, this button must be pressed to make the changes effective in the GD-37.

7.4.7 Days

With this programming mode, the selected audio message will be broadcast only on the days selected in "REPEAT ON DAYS", in the time slot starting at "START TIME" and ending at "STOP TIME", being able to include repetitions of the message with the interval marked by "REPEAT PERIOD" (in multiples of 5 minutes). To set a day of the week, click on the text of the desired day and the associated indicator light will illuminate.

Additionally, you can select the output remote controls that will be activated when this message is activated. To select an output, press on the "OUT" label of the output you wish to activate and the corresponding indication will light up. Any combination of outputs can be activated.

Remember that after modifying parameters that have an associated "SAVE CHANGES" button, this button must be pressed to make the changes effective in the GD-37.

7.4.8 Date to date

This mode allows the message to be broadcast between two specific dates, starting on "START DATE" and ending on "END DATE", from the time "START TIME" to the time "END TIME". In this case, the message repetition period (in multiples of 5 minutes) must also be activated by modifying "REPEAT PERIOD". If the message repetition period is not set in "REPEAT PERIOD", the programme will not be broadcast.

6.5 REMOTE EVENTS

This screen is used to configure common parameters for all the remote control inputs of the GD-37 (IN1 to IN10 and INH).

ude

GD-37 v1.00

Power

Home

Status

System Network

System Time/Date

Calendar events

Remote events

Change Password

Restore to Default

Supervisor Menu

Links

Photo Gallery

GD-37 DIGITAL IP/NETWORK PRE-RECORDED MESSAGES AND BGM PLAYER

Remote Inputs/Outputs Management

From this page you can select which inputs will activate actions on the GD-37, and this actions at the same time will modify also the state of some outputs on the device.

COMMON SETTINGS

Activation Mode

Priority Mode

Closest Contact

Normal

SAVE CHANGES

INPUT SETTINGS

Remote Input

Message File

Priority Level

Trigger Mode

UP

DOWN

SAVE CHANGES

Active Outputs

OUT1

OUT2

OUT3

OUT4

OUT5

OUT6

OUT7

OUT8

OUT9

OUT10

SAVE CHANGES

6.5.1 Activation mode

En el menú desplegable correspondiente, seleccione entre Contacto Abierto, "OPEN CONTACT" o Contacto Cerrado, "CLOSED CONTACT".

Si se selecciona "OPEN CONTACT", el mensaje empezará a reproducirse después de abrir el contacto correspondiente que hasta ese momento permanecía cerrado.

Si se selecciona "CLOSED CONTACT", el mensaje empezará a reproducirse después de cerrar el contacto correspondiente que hasta ese momento permanecía abierto.

6.5.2 Priority mode

In the corresponding pull-down menu, select between Geographical "GEOGRAPHICAL", (the highest priority is IN1 and the lowest priority is IN10), or by numerical value "NUMERICAL", (priority 1 is the highest and priority 10 is the lowest).

Parameters must be specified for each of the "REMOTE INPUT" inputs, such as the audio file name "MESSAGE FILE" and the priority "PRIORITY LEVEL". It is necessary to specify, at each "INPUT" input, whether the message playback activation shall be triggered by an edge ("EDGE" or "push-button" type), or by a level change ("LEVEL" or "Switch" type).

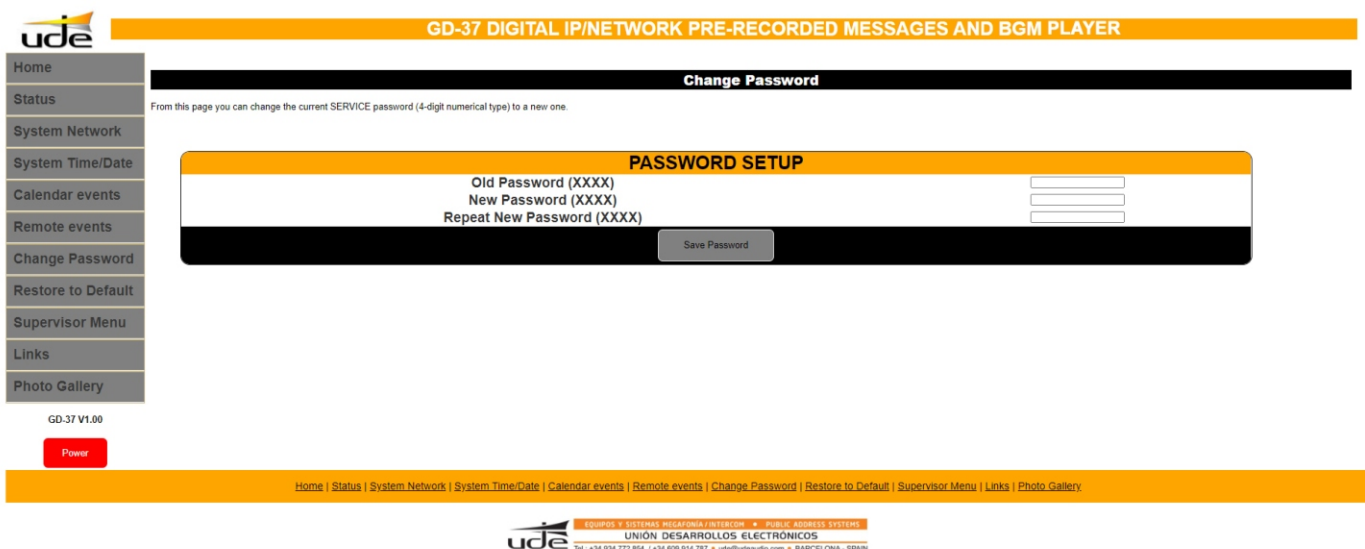
If triggered by an edge, the message shall be played only once from beginning to end. If the activation is by level change, the message shall be played sequentially as long as the level change is maintained.

Additionally, you can select the output remote controls that will be activated when this message is activated. To select an output, press on the "OUT" label of the output to be activated and the corresponding indication will light up. Any combination of outputs can be activated.

Remember that after modifying the parameters that have an associated "SAVE CHANGES" button, this button must be pressed to make the changes effective in the GD-37.

6.6 CHANGE PASSWORD

This page allows us to change the Password:



The screenshot shows the web interface of the GD-37. At the top, there is a yellow header bar with the text "GD-37 DIGITAL IP/NETWORK PRE-RECORDED MESSAGES AND BGM PLAYER". Below this, a black bar contains the text "Change Password". The main content area has a white background with a black border. It contains a section titled "PASSWORD SETUP" with three input fields: "Old Password (XXXX)", "New Password (XXXX)", and "Repeat New Password (XXXX)". A "Save Password" button is located at the bottom right of this section. On the left side, there is a vertical menu with various options: Home, Status, System Network, System Time/Date, Calendar events, Remote events, Change Password (which is highlighted), Restore to Default, Supervisor Menu, Links, and Photo Gallery. At the bottom of the page, there is a yellow footer bar with the text "Home | Status | System Network | System Time/Date | Calendar events | Remote events | Change Password | Restore to Default | Supervisor Menu | Links | Photo Gallery". Below the footer bar, there is a small logo for "UNION DESARROLLOS ELECTRONICOS" and some contact information.

To change the password it will be necessary to enter the current password in the "OLD PASSWORD" box (4 numeric digits), enter the new password in the "NEW PASSWORD" box (4 numeric digits), repeat the new password in the "REPEAT NEW PASSWORD" box.

Do not forget to press "SAVE PASSWORD" to make the changes effective in the GD-37.

NOTE: Remember that the default password is 1234.

6.7 RESTORE TO DEFAULT

This page allows you to reset to factory settings.

Remember that if you reset to factory defaults, all your configuration data will be lost and cannot be recovered.

6.8 SUPERVISOR MENÚ

Advanced settings can be made on this page.

6.8.1 Inhibition remote control input

The equipment has a rear panel input "INH". When this input is enabled and active, it prevents or inhibits the emission of messages activated by the input remote controls. The activation mode of the inhibit input can be either normally closed contact opening or normally open contact closing. This option is selectable as described in section 6.4.4.

To enable or disable this function, simply select the desired option from the drop-down menu under "INHIBITION INPUT".

Do not forget to press "SAVE" to make the changes effective in the GD-37.

6.8.2 Supervisor message

In this section, the monitoring of up to two audio files is activated.

SUPERVISOR MESSAGES				
Supervised Message 1	MASCARA.WAV	UP	DOWN	Activate #1
Supervised Message 2	FRODMANO.WAV	UP	DOWN	Activate #2

To activate the monitoring of an audio file, simply select it in the "**SUPERVISED MESSAGE 1**" or "**SUPERVISED MESSAGE 2**" box, using the respective "**UP**" and "**DOWN**" buttons, and confirm your choice with the "**ACTIVATE #1**" or "**ACTIVATE #2**" button, as appropriate.

NOTES:

- In case supervision is not necessary, it is recommended to keep these boxes empty. When a supervised message is activated by pressing the corresponding "**ENTER**" button, the GD-37 will take some time to analyse the file and calculate the internal supervision data; during this time, which basically depends on the size of the file (usually a few minutes) the equipment may respond slowly or temporarily stop responding.

- The "**SUPERVISOR MODE**" factory settings can be restored by pressing the "**RESTORE**" button in the "**RESTORE SUPERVISOR**" section.)

Restore Supervisor
To reset the Supervisor configuration to the default condition of settings.
Do you want to RESET Supervisor Configuration? If you have doubts, please CANCEL.
<div>RESTORE</div> <div>CANCEL</div>

To stop the playback of a supervised message, press the "**STOP**" button on the GD-37 and enter the requested password.

6. FTP Server

The GD-37 allows the audio and data files to be updated remotely by accessing the FTP server included in the GD-37.

To perform the update you will need to familiarise yourself with the FTP client available on your operating system (Windows includes the ftp.exe software).

During the update configuration process, you will be asked for the IP address of the server or HOST, i.e. the GD-37. This address when working in AUTO mode (DHCP) is \GD37 or \GD37, or in MANUAL mode 192.168.0.200 (or the one that appears in the configuration).

The FTP server is linked to 4 different users (MUSIC, VOICE, SOUND and SETTINGS), which correspond to the destination folders where the selected files will be stored:

If the MUSIC user is selected it will be to store a music file in "MP3" format, if the VOICE or SOUND users are selected it will be to upload a voice file in "wav" format, if the SETTINGS user is selected it will be to upload a file of the "bin" format.

The FTP server included in GD-37 only responds to a limited number of commands which makes it not fully compatible with some available FTP clients. The use of command line based FTP clients is recommended.

The available commands and a brief description of how to use them are listed below.

```

OPEN <dirección HOST GD37>
USER <MUSIC, SOUND, VOICE o SETTINGS>
PASSWORD <1234 O Password de servicio Nivel 1>
PUT <Ruta\Nombre_de_Archivo.Extensión>
CLOSE (Close connection without exiting the FTP client program)
QUIT (Close connection and Exit the FTP client program)
  
```

Below is the process of updating a "wav" voice file corresponding to the message "Welcome.wav". To do this, we must open the command line window in Windows or "Command Prompt", available in the Accessories menu and follow the steps:

```
C:\>FTP
ftp> OPEN GD36 (... o OPEN 192.168.0.200)
Connected to GD36.
220 Ready
User (GD36:(none)): VOICE
331 Password required
Password: 1234
230 Logged in
ftp> PUT C:\AUDIO\Welcome.wav
200 Ok
150 Transferring data...
226 Transfer Complete
ftp: 705644 bytes sent in 17,21 segundos at 41,00 Kbytes/s.
ftp> CLOSE
221 Bye
C:\>
```

If an error occurs when entering the password, as in this example:

```
C:\>FTP
ftp> OPEN GD36
Connected to GD36.
220 Ready
User (GD36:(none)): VOICE
331 Password required
Password: 1234
Error to start session. ←Error en PASSWORD
ftp> CLOSE
221 Bye
ftp> OPEN GD36
Connected to GD36.
220 Ready
User (GD36:(none)): VOICE
331 Password required
Password: 1234
230 Logged in
... y continúa
```

The current session of the VOICE user has to be closed, and a new session has to be opened by repeating the whole process again.

The GD-37 server has a reduced number of functions, it is not allowed to delete, list, rename or retrieve remote files.

If the selected file already exists in the GD-37, it will be replaced without prior confirmation from the user.

NOTES:

When using the FTP server the GD-37 must be in STOP mode. It will prevent errors during data update and will not slow down the data update speed.

In order to perform a remote update from the Internet (outside the local network), the external TCP ports (20, 21) must be redirected to the internal TCP ports (20, 21) at the MANUAL IP address with which the GD-37 was previously configured and the FTP protocol must be enabled in the FIREWALL/Antivirus. To perform this task it will be necessary to contact your local network administrator.

It is not allowed to upload files with a name longer than 8 characters excluding the 4 characters of the extension (.mp3, .wav or .bin).

For MP3 files, the GD-37 will use the ID3 data and display the name of the song in an extended size on the display of the device.

The GD-37 needs to refresh the data after finishing the updates for them to take effect; for this the GD-37 must be switched off and on again locally. It can be done remotely by logging out of the FTP client using the CLOSE or QUIT commands.

When you execute one of these commands, the GD-37 will automatically reset and your new data will take effect. You can also wait 3 minutes (approx.) since the last update operation and the update system will shut down completely, and the new data will take effect.

6. ANNEX 1. ADVANCE TIME

REG Value	TIEMPO A COMPENSAR MEDIANTE REGISTRO			
	30 DAYS (SEC)	60 DAYS (SEC)	90 DAYS (SEC)	360 DAYS (SEC)
0	0,00	0,00	0,00	0,00
+1	2,64	5,27	7,91	31,64
+2	5,27	10,55	15,82	63,28
+3	7,91	15,82	23,73	94,92
+4	10,55	21,09	31,64	126,56
+5	13,18	26,37	39,55	158,20
+6	15,82	31,64	47,46	189,84
+7	18,46	36,91	55,37	221,48
+8	21,09	42,19	63,28	253,13
+9	23,73	47,46	71,19	284,77
+10	26,37	52,73	79,10	316,41
+11	29,00	58,01	87,01	348,05
+12	31,64	63,28	94,92	379,69
+13	34,28	68,55	102,83	411,33
+14	36,91	73,83	110,74	442,97
+15	39,55	79,10	118,65	474,61
+16	42,19	84,38	126,56	506,25
+17	44,82	89,65	134,47	537,89
+18	47,46	94,92	142,38	569,53
+19	50,10	100,20	150,29	601,17
+20	52,73	105,47	158,20	632,81
+21	55,37	110,74	166,11	664,45
+22	58,01	116,02	174,02	696,09
+23	60,64	121,29	181,93	727,73
+24	63,28	126,56	189,84	759,38
+25	65,92	131,84	197,75	791,02
+26	68,55	137,11	205,66	822,66
+27	71,19	142,38	213,57	854,30
+28	73,83	147,66	221,48	885,94
+29	76,46	152,93	229,39	917,58
+30	79,10	158,20	237,30	949,22
+31	81,74	163,48	245,21	980,86
+32	84,38	168,75	253,13	1012,50
+33	87,01	174,02	261,04	1044,14
+34	89,65	179,30	268,95	1075,78
+35	92,29	184,57	276,86	1107,42
+36	94,92	189,84	284,77	1139,06
+37	97,56	195,12	292,68	1170,70
+38	100,20	200,39	300,59	1202,34
+39	102,83	205,66	308,50	1233,98
+40	105,47	210,94	316,41	1265,63
+41	108,11	216,21	324,32	1297,27
+42	110,74	221,48	332,23	1328,91
+43	113,38	226,76	340,14	1360,55
+44	116,02	232,03	348,05	1392,19
+45	118,65	237,30	355,96	1423,83
+46	121,29	242,58	363,87	1455,47
+47	123,93	247,85	371,78	1487,11
+48	126,56	253,13	379,69	1518,75
+49	129,20	258,40	387,60	1550,39
+50	131,84	263,67	395,51	1582,03
+51	134,47	268,95	403,42	1613,67
+52	137,11	274,22	411,33	1645,31
+53	139,75	279,49	419,24	1676,95
+54	142,38	284,77	427,15	1708,59
+55	145,02	290,04	435,06	1740,23
+56	147,66	295,31	442,97	1771,88
+57	150,29	300,59	450,88	1803,52
+58	152,93	305,86	458,79	1835,16
+59	155,57	311,13	466,70	1866,80
+60	158,20	316,41	474,61	1898,44
+61	160,84	321,68	482,52	1930,08
+62	163,48	326,95	490,43	1961,72
+63	166,11	332,23	498,34	1993,36
+64	168,75	337,50	506,25	2025,00

6. ANNEX 2. DELAY TIME

REG Value	TIME TO BE COMPENSATED BY RECORD			
	30 DAYS (SEC)	60 DAYS (SEC)	90 DAYS (SEC)	360 DAYS (SEC)
0	0,00	0,00	0,00	0,00
-1	-2,64	-5,27	-7,91	-31,64
-2	-5,27	-10,55	-15,82	-63,28
-3	-7,91	-15,82	-23,73	-94,92
-4	-10,55	-21,09	-31,64	-126,56
-5	-13,18	-26,37	-39,55	-158,20
-6	-15,82	-31,64	-47,46	-189,84
-7	-18,46	-36,91	-55,37	-221,48
-8	-21,09	-42,19	-63,28	-253,13
-9	-23,73	-47,46	-71,19	-284,77
-10	-26,37	-52,73	-79,10	-316,41
-11	-29,00	-58,01	-87,01	-348,05
-12	-31,64	-63,28	-94,92	-379,69
-13	-34,28	-68,55	-102,83	-411,33
-14	-36,91	-73,83	-110,74	-442,97
-15	-39,55	-79,10	-118,65	-474,61
-16	-42,19	-84,38	-126,56	-506,25
-17	-44,82	-89,65	-134,47	-537,89
-18	-47,46	-94,92	-142,38	-569,53
-19	-50,10	-100,20	-150,29	-601,17
-20	-52,73	-105,47	-158,20	-632,81
-21	-55,37	-110,74	-166,11	-664,45
-22	-58,01	-116,02	-174,02	-696,09
-23	-60,64	-121,29	-181,93	-727,73
-24	-63,28	-126,56	-189,84	-759,38
-25	-65,92	-131,84	-197,75	-791,02
-26	-68,55	-137,11	-205,66	-822,66
-27	-71,19	-142,38	-213,57	-854,30
-28	-73,83	-147,66	-221,48	-885,94
-29	-76,46	-152,93	-229,39	-917,58
-30	-79,10	-158,20	-237,30	-949,22
-31	-81,74	-163,48	-245,21	-980,86
-32	-84,38	-168,75	-253,13	-1012,50
-33	-87,01	-174,02	-261,04	-1044,14
-34	-89,65	-179,30	-268,95	-1075,78
-35	-92,29	-184,57	-276,86	-1107,42
-36	-94,92	-189,84	-284,77	-1139,06
-37	-97,56	-195,12	-292,68	-1170,70
-38	-100,20	-200,39	-300,59	-1202,34
-39	-102,83	-205,66	-308,50	-1233,98
-40	-105,47	-210,94	-316,41	-1265,63
-41	-108,11	-216,21	-324,32	-1297,27
-42	-110,74	-221,48	-332,23	-1328,91
-43	-113,38	-226,76	-340,14	-1360,55
-44	-116,02	-232,03	-348,05	-1392,19
-45	-118,65	-237,30	-355,96	-1423,83
-46	-121,29	-242,58	-363,87	-1455,47
-47	-123,93	-247,85	-371,78	-1487,11
-48	-126,56	-253,13	-379,69	-1518,75
-49	-129,20	-258,40	-387,60	-1550,39
-50	-131,84	-263,67	-395,51	-1582,03
-51	-134,47	-268,95	-403,42	-1613,67
-52	-137,11	-274,22	-411,33	-1645,31
-53	-139,75	-279,49	-419,24	-1676,95
-54	-142,38	-284,77	-427,15	-1708,59
-55	-145,02	-290,04	-435,06	-1740,23
-56	-147,66	-295,31	-442,97	-1771,88
-57	-150,29	-300,59	-450,88	-1803,52
-58	-152,93	-305,86	-458,79	-1835,16
-59	-155,57	-311,13	-466,70	-1866,80
-60	-158,20	-316,41	-474,61	-1898,44
-61	-160,84	-321,68	-482,52	-1930,08
-62	-163,48	-326,95	-490,43	-1961,72
-63	-166,11	-332,23	-498,34	-1993,36
-64	-168,75	-337,50	-506,25	-2025,00

