

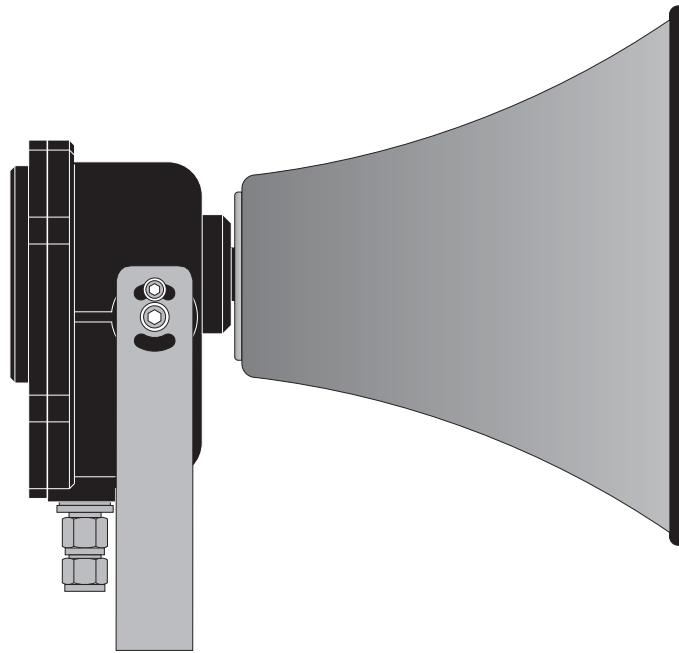
# BP-30/SM-30



## WATERTIGHT HORN SPEAKER

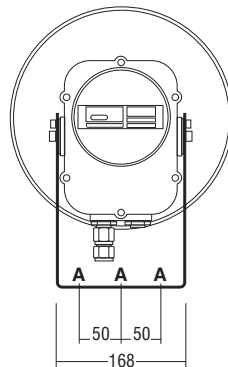
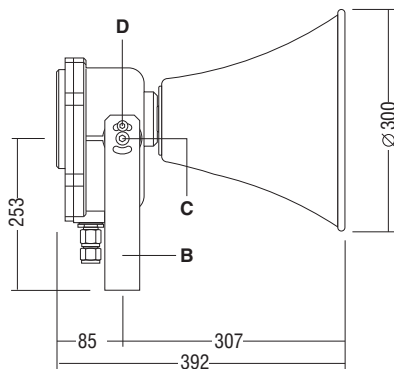
### DEGREE OF CASING PROTECTION

|                                  |              |            |
|----------------------------------|--------------|------------|
| STANDARDS                        | EN 60529     | UNE 20-324 |
| IP CODE                          | <b>IP-66</b> |            |
| L.G.A.I. CERTIFICATE nº 98015531 |              |            |



### TECHNICAL CHARACTERISTICS

|                    |                       |                  |               |
|--------------------|-----------------------|------------------|---------------|
| - Rated power:     | 35 W.                 | - Impedance:     | 16 $\Omega$ . |
| - Sensitivity (*): | 104 dB 1 W/1 kHz/1 m. | - Opening angle: | 60°.          |
| - Frequency range: | 150 to 10000 Hz.      | - Weight:        | 6 Kg.         |



### BP-30/SM-30

Horn: BP-30/E

Driver: SM-30

**A = 3 FASTENING SCREWS**  
( $\varnothing$  11 mm.)

**B = BRACKET**

**C = VERTICAL ORIENTATION  
SCREW**

**D = BRACKET SCREW**

MEASUREMENTS IN MILLIMETRES  
SCREWS: STAINLESS STEEL.



EQUIPOS Y SISTEMAS MEGAFONÍA / INTERCOM • PUBLIC ADDRESS SYSTEMS

UNIÓN DESARROLLOS ELECTRÓNICOS

Tel.: +34 934 772 854 / +34 609 914 787 • ude@udeaudio.com • BARCELONA - SPAIN



[www.udeaudio.com](http://www.udeaudio.com)

rev.0 610.111A 1 / 2

### DESCRIPTION

The BP-30/SM-30 watertight horn speaker consists of BP-30/E exponential pavilion made of aluminium and an SM-30 35 W RMS watertight driver.

The SM-30 driver has an impedance of  $16\ \Omega$ .

The surround casing is made of aluminium alloy and the screws are made of stainless steel.

### INSTALLATION

Its steel bracket means it can be placed to face in any direction, and can also be fixed permanently using two screws which are provided for this purpose.

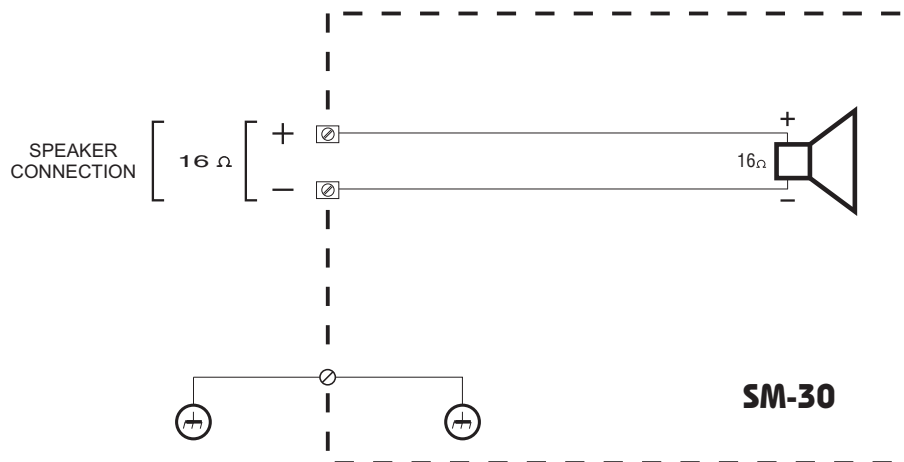
The cable is run through a 3/4" thread NPT cable gland. If necessary, several speakers can be connected in parallel by removing a threaded obturating plug, and fitting a second stuffing box in its place, thereby simplifying installation.

### APPLICATIONS

For indoor and outdoor public address installations, as well as in industrial and marine environments.

Certificate: L.G.A.I. n° 98015531

Valid for all EEC countries, and others.



### TYPICAL INSTALLATION

