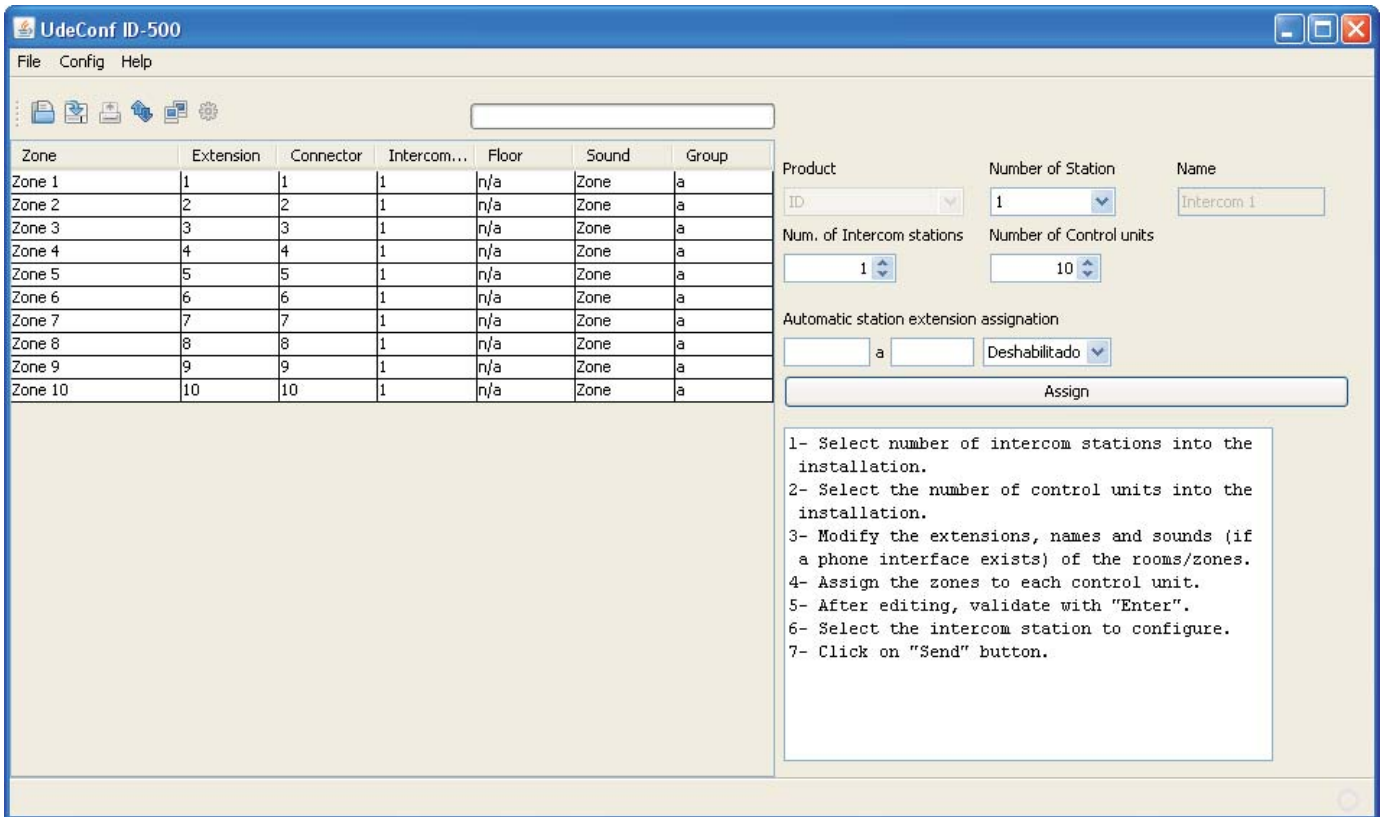


CONFIGURATION INTERCOM-500 System UdeConf ID-500



SUMMARY

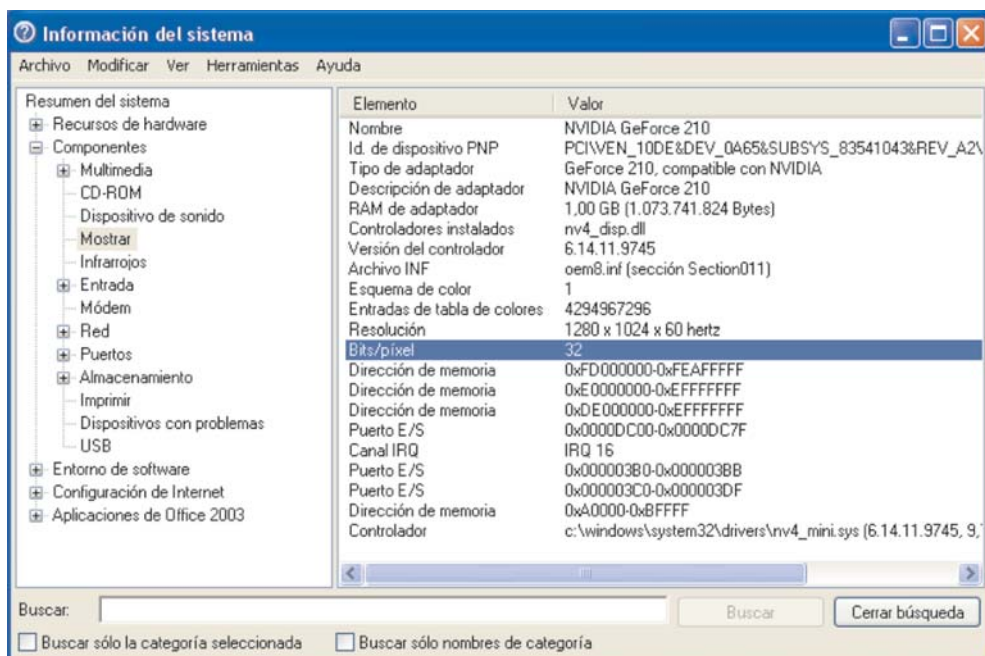
	Page
WINDOWS OPERATING SYSTEM 32 or 64 bits _____	2
SOFTWARE INSTALLATION _____	3
CONNECTIONS _____	4
INTERCOM-500 SYSTEM CONFIGURATION _____	5
Configuration _____	6 - 7
Open / Save / Print the configuration file _____	8
Control panel _____	9
Setting table _____	10

SOFTWARE INSTALLATION

To determine whether the operative system is 32 bit or 64 bit, follow the following indications:

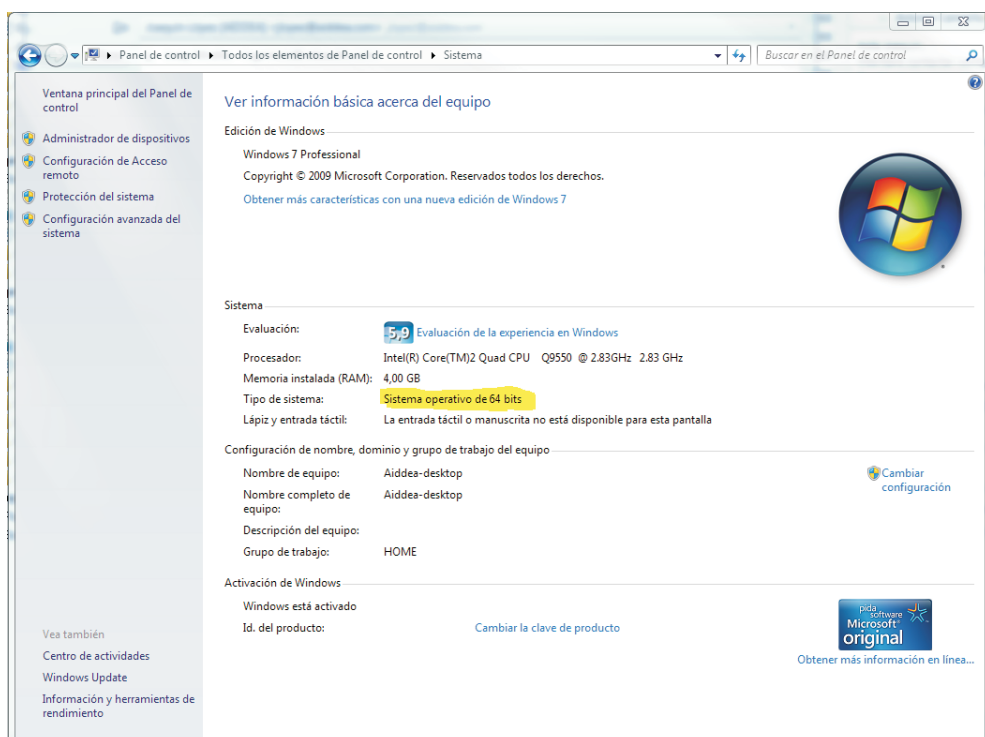
WINDOWS 2000 WINDOWS XP

- Click on:
- Home screen
 - Programs
 - Accessories
 - Tools-System
 - Information System
 - Components
 - Show



WINDOWS 7 WINDOWS VISTA

- Click on:
- Control Panel
 - System



According to the above, download the corresponding compressed folder.

UDECONF-ID500-x32-v.2.3-EN
UDECONF-ID500-x64-v.2.3-EN

SOFTWARE INSTALLATION

Decompress the folder UDECONF-ID500-x32.v.2.3-EN / UDECONF-ID500-x64-v.2.3-EN in the computer used for the configuration.

Within the directory UDECONF-ID500 created, start the program by running UDEConf.jar

Nombre	Tipo
lib	Carpeta de archivos
UDEConf	Carpeta de archivos
.DS_Store	Archivo DS_STORE
info-UDEConf_ID500	Adobe Acrobat Document
README	Documento de texto
rxtxSerial64.dll	Extensión de la aplicación
rxtxSerial.dll	Extensión de la aplicación
UDEConf	Executable Jar File



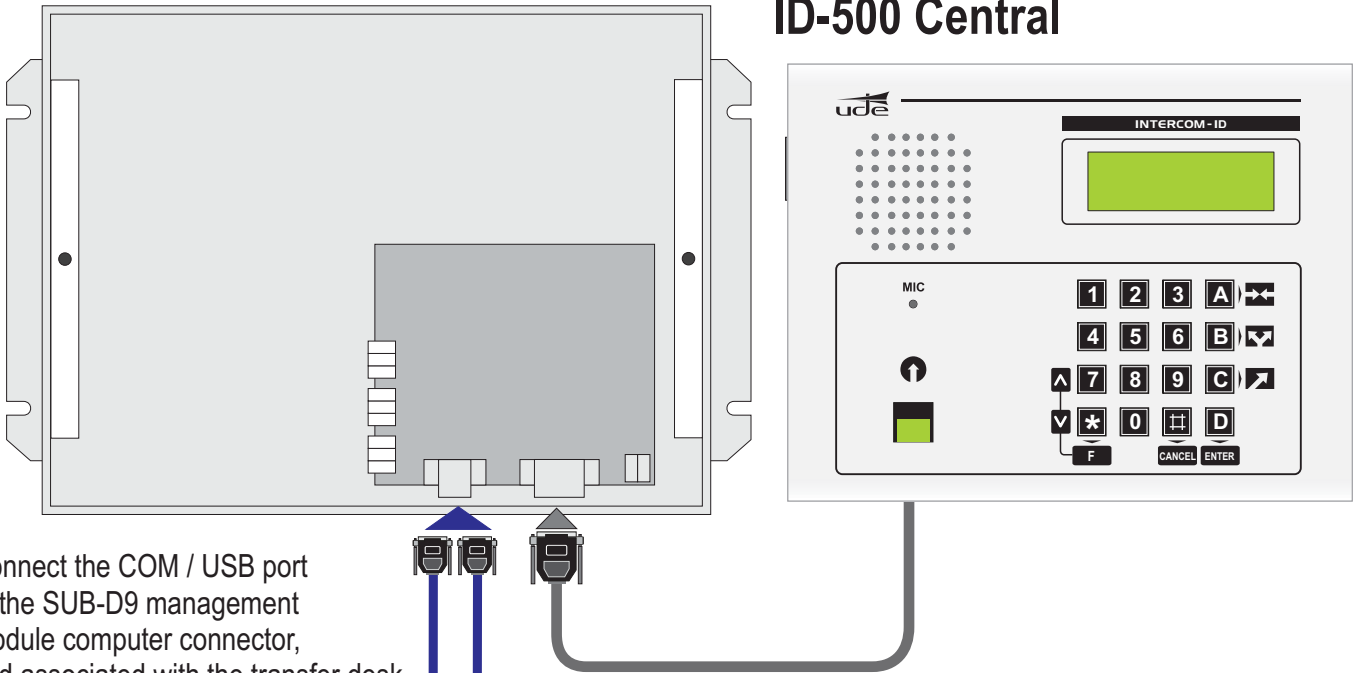
Minimum computer requirements:

- Windows 2000 or superior
- Java JRE v6 (*)
- 512 Mb RAM
- 10 Mb hard disk
- Serial port RS-232

(*)If you have not installed the Java JRE v6 on your computer, download it from the manufacturer's website (<http://www.java.com/download/>) and install on your PC.

CONNECTIONS

ID-500 Central



Connect the COM / USB port to the SUB-D9 management module computer connector, and associated with the transfer desk.

Power the system.

WIRE SUPPLIED
Wire with 2 SUB-9 connectors without crossing.



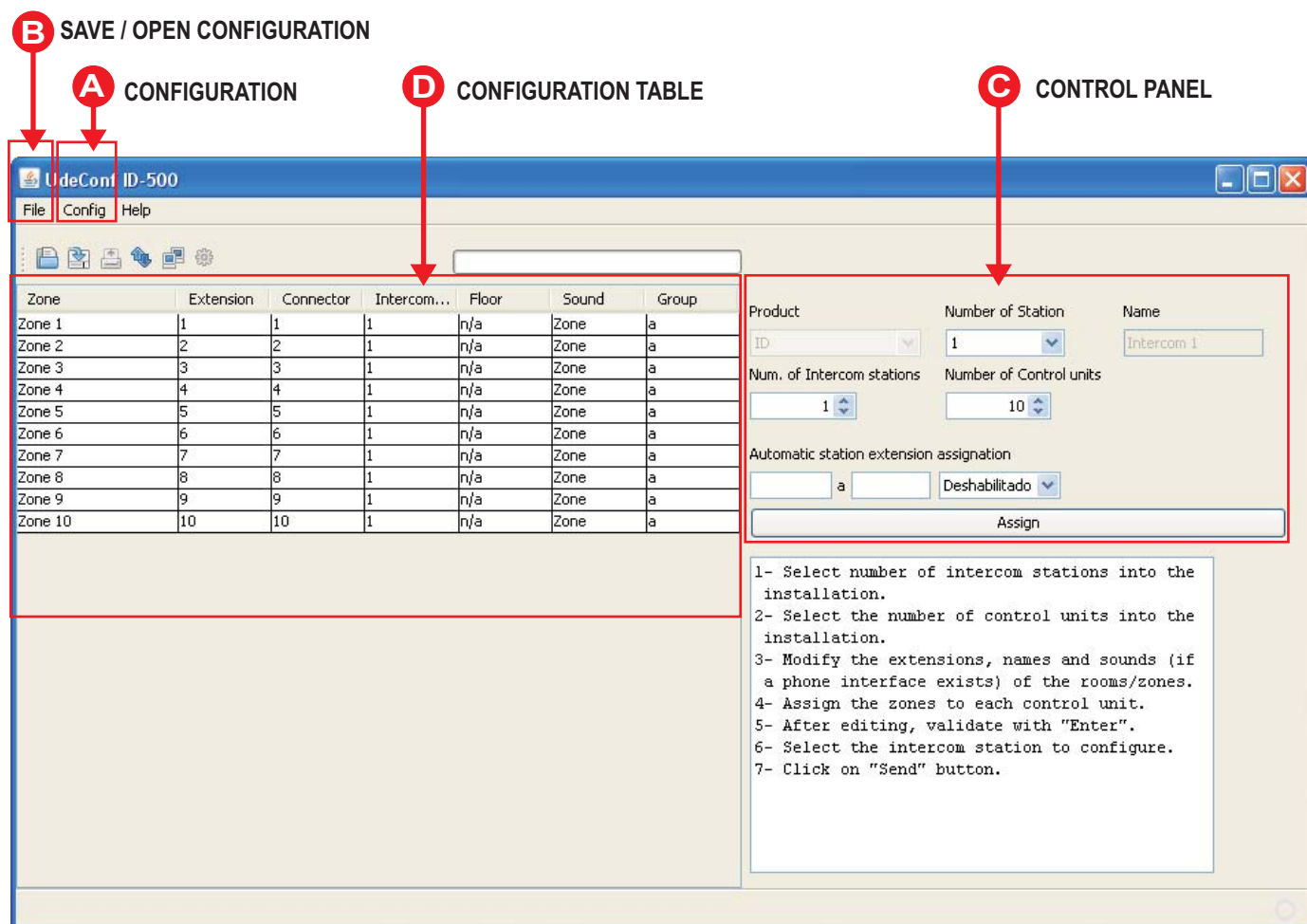
COM
USB

If your computer does not have the SUB-D9 connector on the COM port to connect the supplied cable, use a USB to RS-232 converter, and must operate in full duplex.
(For example: ATEN UC-232 A)

CONVERTER INCLUDED

SYSTEM CONFIGURATION INTERCOM-200

Once connected the computer to the ID-500 central, run **UDEConf_ID500.jar** to start **UdeConf ID-500**.



The steps for configuring a system are:

1. Select in the Control Panel the total number of secondary (selection of 20, 40, 60 ...)
2. Select in the Control Panel the number of desks in the system (To assign a name to each desk, go to Menu: Config-> name desks, and editing)
3. Awarded the rank of each table to each desk (possible **automatic** assignment)
4. Change the table cells according to the characteristics of the installation. (The meaning of each cell is described below.)
5. Connect the RS-232 wire to the module corresponding to the desk no. 1. Ensure that the rank assigned to the modules corresponds with the rank of the desk.
6. Select in the Control Panel the number of the desk (in this case, 1).
7. To configure, go to Menu: Config-> Send.
8. If there are more desks connected to the system, repeat steps 5, 6 and 7 for each one, changing the number of desk and connecting RS-232 wire.
9. To save the configuration to a file for later use, click on the menu: File-> Save.

To edit the text of a cell, double-click on it.

You can use the command:

CONTRL + C= **Copy** CNTRL + V= **Paste** CNTRL + X= **Cut** CNTRL + Y= **Redo** CNTRL + Z= **Undo**

After editing a field, confirm with Intro ↵

A CONFIGURATION

A

Zone	Connector	Intercom...	Floor	Sound	Group
Zone 1	1	1	n/a	Zone	a
Zone 2	2	2	n/a	Zone	a
Zone 3	3	1	n/a	Zone	a

Open Save Print Send Test Configuration

All these functions are also available on the icons on the taskbar.

A1- Configuration flap - Configuration

The assignment appears on the screen of the COM port.
 Select the port connected to the desk.
 Then ACCEPT.

A2- Configuration flap - Desks names

Nombre pupitre	ID Pupitre
Intercom 1	1

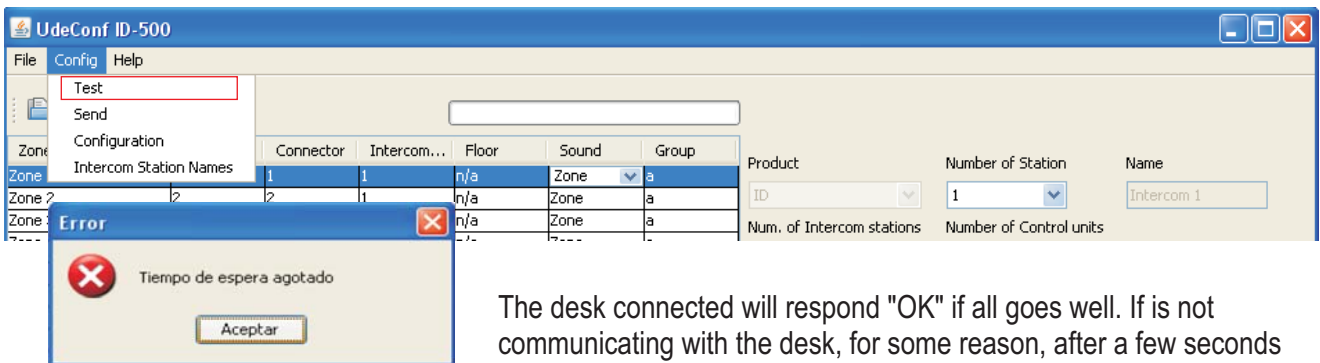
Write the name of the desk that you specify.
 After editing the desk name.
 Confirm with Intro.

A

CONFIGURATION

A3-Configuration flap

- Test

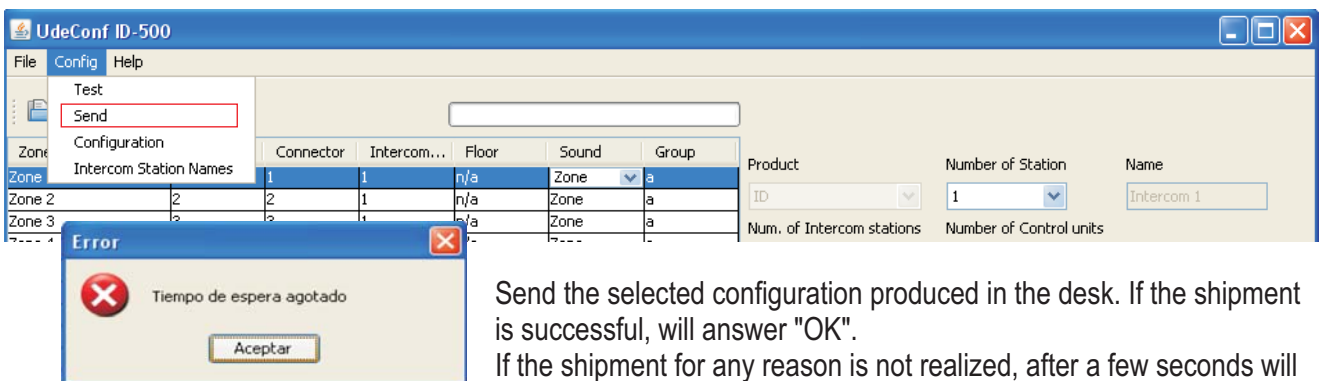


The desk connected will respond "OK" if all goes well. If is not communicating with the desk, for some reason, after a few seconds will display "Timeout".

In this case, back to **Configure (A1)** and select a different port COM and pass the **Test (A3)** to indicate that communication is "OK".

A4- Configuration flap

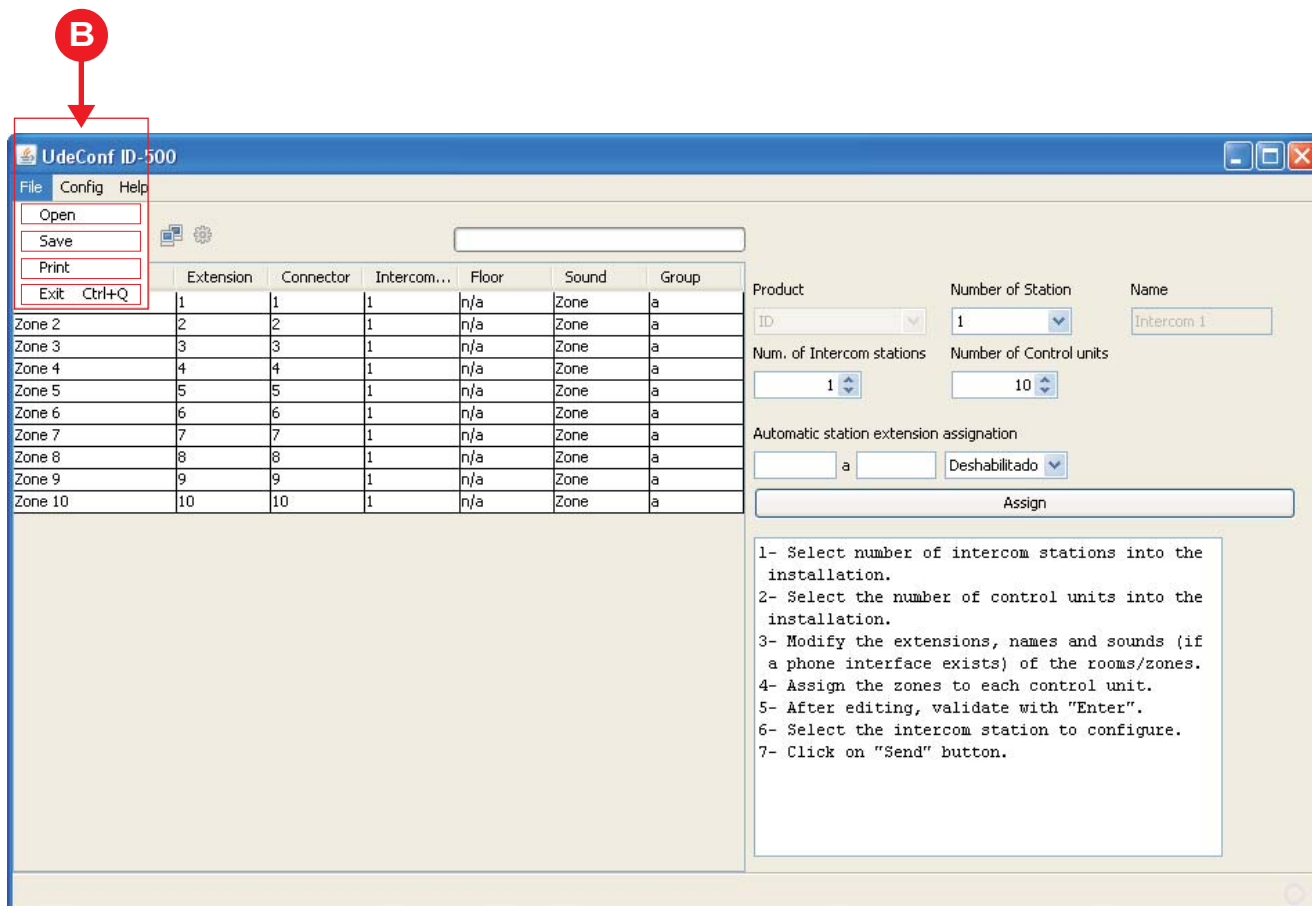
- Send



Send the selected configuration produced in the desk. If the shipment is successful, will answer "OK".

If the shipment for any reason is not realized, after a few seconds will display "Timeout".

In this case, back to **Configure (A1)** and select a different port COM and pass the **Test (A3)** to indicate that communication is "OK".



On the File menu there are the options:

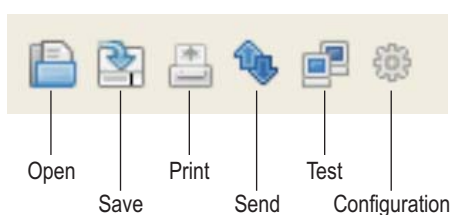
Open : Retrieves a previously saved configurations.

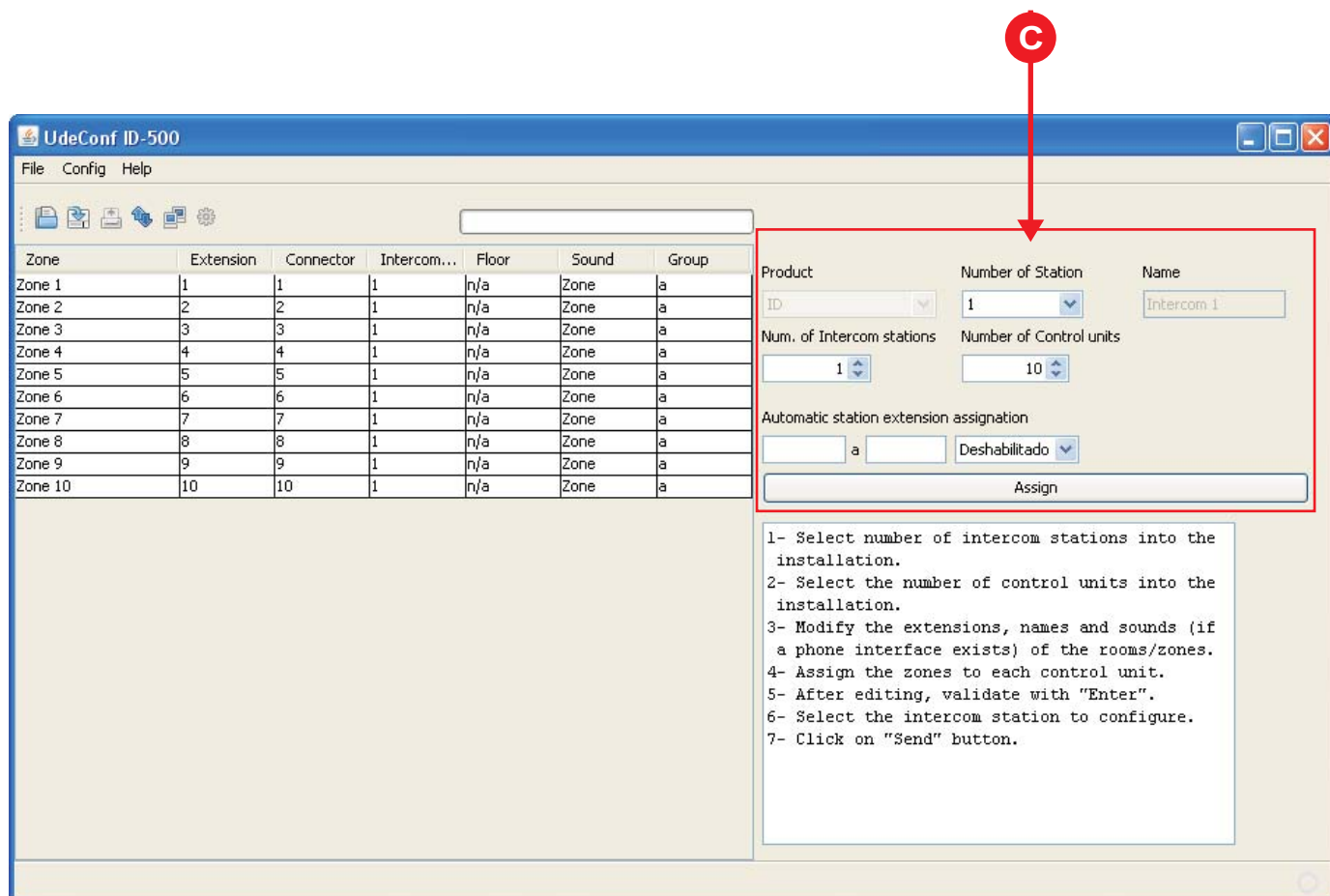
Save : Save the configuration being edited on the computer.

Print : Print the configuration table.

Out : Close the UDECONF ID-500 program.

All these functions are also available on the icons on the taskbar.





Product: Parameter cannot be changed.

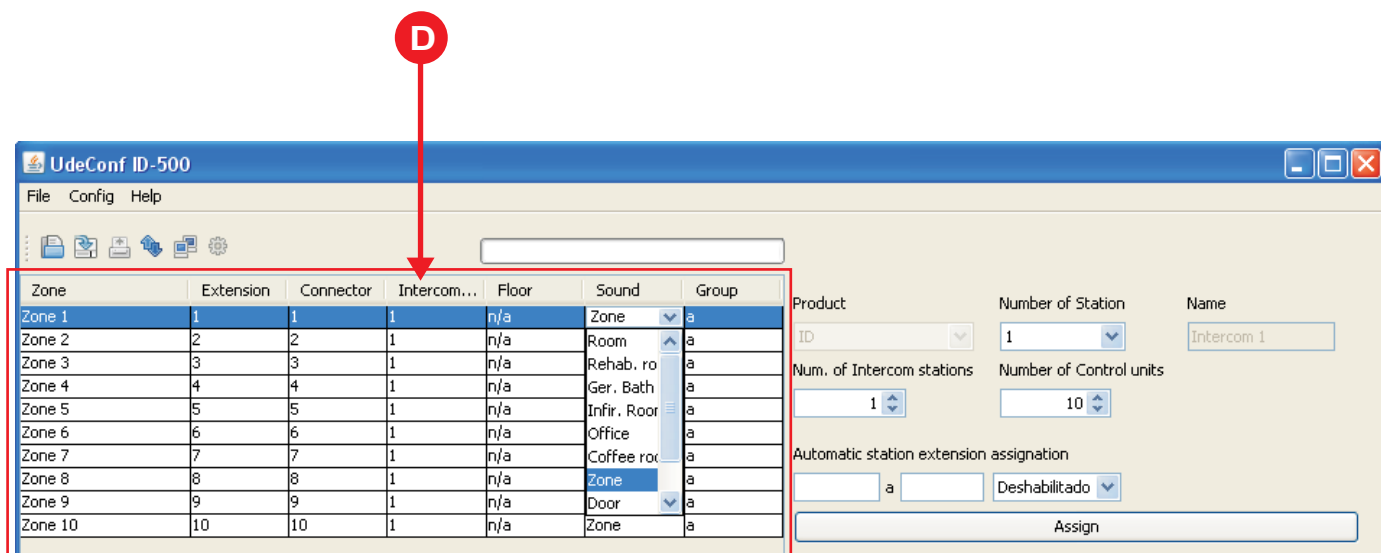
Desk number: Select the number of desk set.

Name: The text that appears on the desk set. For editing, go to Setup menu-> Desk name, and change the names of the various desks.

Number of desks: Total number of desks in the system.

Secondary number: Total number of secondary in the system (selection of 20, 40, 60 ...).

Automatic assignment of extensions to desks: Optional to assign desks to a zone row with comfort, you enter the row and the desk and set itself on the table without going area by area.



Zone: A descriptive title for **zone** (maximum 19 characters).

Extension: Number of **zone** you want. (Rank 1-9999).

Note: This number called "extension" identifies the area. Reveal them self on the screen when you receive a call (or in addition to the name of the zone). He is also the extension number then as the spoken message if the telephones interface IW-18 exists.

Connector: The column is not editable. It shows the terminal connection of the call for each zone.

Desk: Desk that is assigned to the **zone**. Editable.

Floor: Not applicable to ID-500.

Sound: ID sound of the type of **zone** that will be played on the phone. Display flap and select the desired name.

Room - Physiotherapy - Geriatric Bath - Room Nursing - Office - Area -Gateway - Community - Hall.

Group: The different areas can be grouped into 3 different groups **(a)**, **(b)**, **(a+b)**.

After configuring the system, since in normal use, the desk can select performance **group a**, **group b**, or **group a + b**.

When selected the group, the desk will handle calls only areas included in that group.

To edit the text of a cell, double-click the same.

You can use the command:

CONTRL + C= **Copy** CNTRL + V= **Paste** CNTRL + X= **Cut** CNTRL + Y= **Redo** CNTRL + Z= **Undo**

After editing a field, confirm with Intro