

Software performance

- PX-99 password configuration
- Input and output volume control
- Microphone or auxiliary input configuration for each channel
- Treble and bass adjustment for each channel
- Speech filter configuration for each channel
- Phantom supply control for each channel
- Remote control configuration
- Priority adjustment
- Matrix control
- Fading adjustment of -6db per output
- Function keys configuration
- VOX recovery time adjustment

INSTALLATION

The SF-99 software will only be installed once.

1- The SF-99 software is developed under JAVA version 7.0. You must have JRE installed before proceeding with the installation. If you have it installed, proceed to step 2. Otherwise, the JRE version is available as free download on this link: <http://www.java.com/download>.

IMPORTANT: for Windows 10 users uninstall any JAVA version installed in your PC, both versions x64 and x86. Install the JAVA version that we supply (version 8, 171 update). This is a 32 bits version, install it even if your system is 64bits.

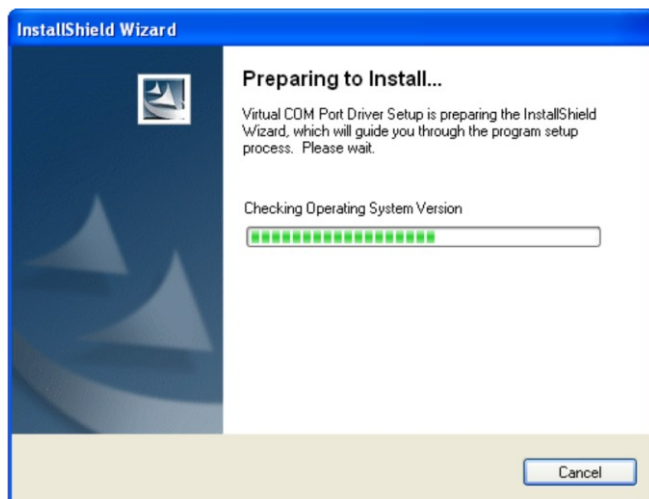
2- Download the SF-99 software from the website of Unión Desarrollos Electrónicos: www.udeaudio.com

Available two versions for different operating systems:

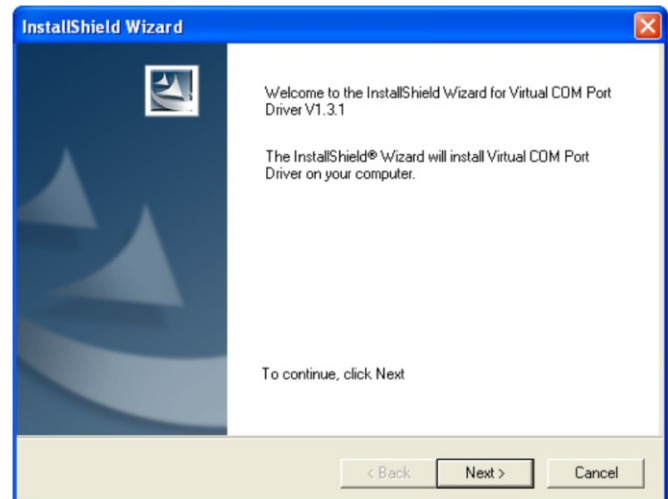
- Windows XP
- Windows vista and Windows 7.
- Windows 10

3- Unzip the RAR file "SF-99.rar" in a specific folder

4- Install the drivers of the virtual COM port from SF-99. In the unzipped folder, you will find a folder named "Drivers" in which you will find 2 executables, one for 32 bit processors and another one for 64 bit processors. Open the file according to the processor used in your computer.



- The installation process will begin



- Follow the instructions showing on screen
- Completing the installation of the virtual COM drivers

5- Copy the installation files located in the folder named "files" and paste them one by one in the JAVA folders as followed:

-File win32com.dll >> To folder Java\Bin
Example: C:\Program Files(x86)\Java\jre1.8.0_171\bin

-File comm.jar >> To folder Java\lib\ext
Example: C:\Program Files(x86)\Java\jre1.8.0_171\lib\ext.

-File javax.comm.properties >> To folder Java\lib
Example: C:\Program Files\Java\jre7\lib

Once the installation is finished, reset the computer for the system to apply the convenient modifications to the system.

FUNCTIONALITY

Before starting the software you must have installed the drivers and the configuration files.

You must also connect the PX-99 to the computer using an A-B type USB cable (as shown in the picture).

Start up the PX-99.

Run the SF-99.jar file.

The following screen will appear

A - CONFIGURATION / COMMUNICATION PANEL

B - AUDIO SETTINGS PANEL



SF-99
Configuration file

COM port

Input configuration

10 / 00	Volume	5	5	5	5	5	5	5	5	5	5	5
AUX / MIC	MIC/AUX selection	MIC	MIC	MIC	MIC	MIC	MIC	MIC	MIC	AUX	AUX	AUX
+10 / -10	Bass	0	0	0	0	0	0	0	0	0	0	0
+10 / -10	Treble	0	0	0	0	0	0	0	0	0	0	0
50 / 00	VOX control	4	4	4	4	4	4	4	4	4	4	4
ON / OFF	Speech filter	OFF	OFF	OFF	OFF	OFF	OFF	OFF	OFF	OFF	OFF	OFF
ON / OFF	Phantom supply	ON	ON	ON	ON	ON	ON	ON	ON	OFF	OFF	OFF
ON / OFF	Remote control	OFF	OFF	OFF	OFF	OFF	OFF	OFF	OFF	OFF	OFF	OFF
8: higher / 1: lower	Priority	1	1	1	1	1	1	1	1	1	1	1
A / B / A+B	Output selection	A	A	A	A	A	A	A	A	A	A	A

MASTER A

Output configuration

5

OFF

MASTER B

Output configuration

5

OFF

F1 **F2** **F1 and F2 function**

OUT A OUT B Vol control set 10 / 0

Time **Recovery VOX time**

0,5s Recovery VOX time 5s / 05s

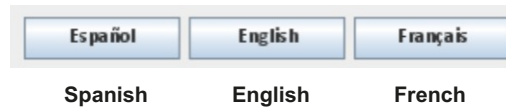
Settings will take effect when sending the configuration

Rev.0 | 610.427a | 3 / 5

A

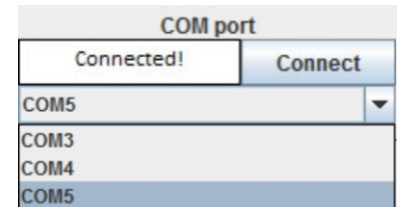
CONFIGURATION / COMMUNICATION PANEL

Software enables 3 different languages. To change language you just have to press the corresponding icon using the mouse.

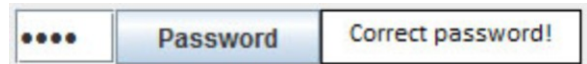


The communication panel allows initiating communication between software and PX-99.

A-1. Communication with COM port. Allows choosing between all COM ports available in the computer and connecting with the one chosen. Choose the COM port within the options offered on the list. Next, click on the Connect button. If equipment and software are correctly synched, the word Connected should appear.



A-2. You must enter a password for identification. Introduce the equipment password (Default value: 2 1 2 1) and press Password to verify.



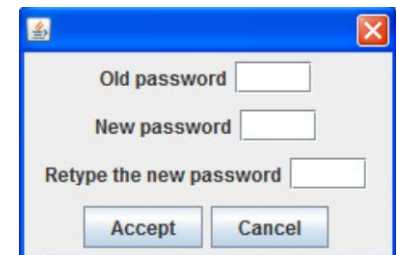
If steps **A-1** and **A-2** have been successfully completed, that means you are connected to PX-99. From now on you can change the basic configuration, load previous configurations from a file or also receive the actual PX-99 configuration.



A-3. Change of password

When you click on this icon, a screen shows up and you will be able to manage the equipment password.

Attention! Once the password is modified, it will remain permanent to access the technical mode, whether using SF-99 or PX-99.



A-4. Save actual configuration of the SF-99 device.

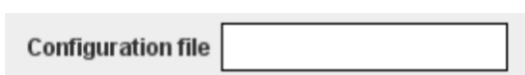
Files must contain the .TXT extension.



A-5. Load a configuration file of the SF-99 device.

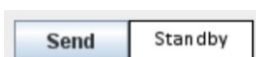
Files must contain the .TXT extension.

When the software loads the file correctly, the file's name should appear at the top of the screen.



A-6. Receive the SF-99 device actual configuration

If you want to receive all the configuration information set on the PX-99 you can load it directly to the program by clicking on this icon.



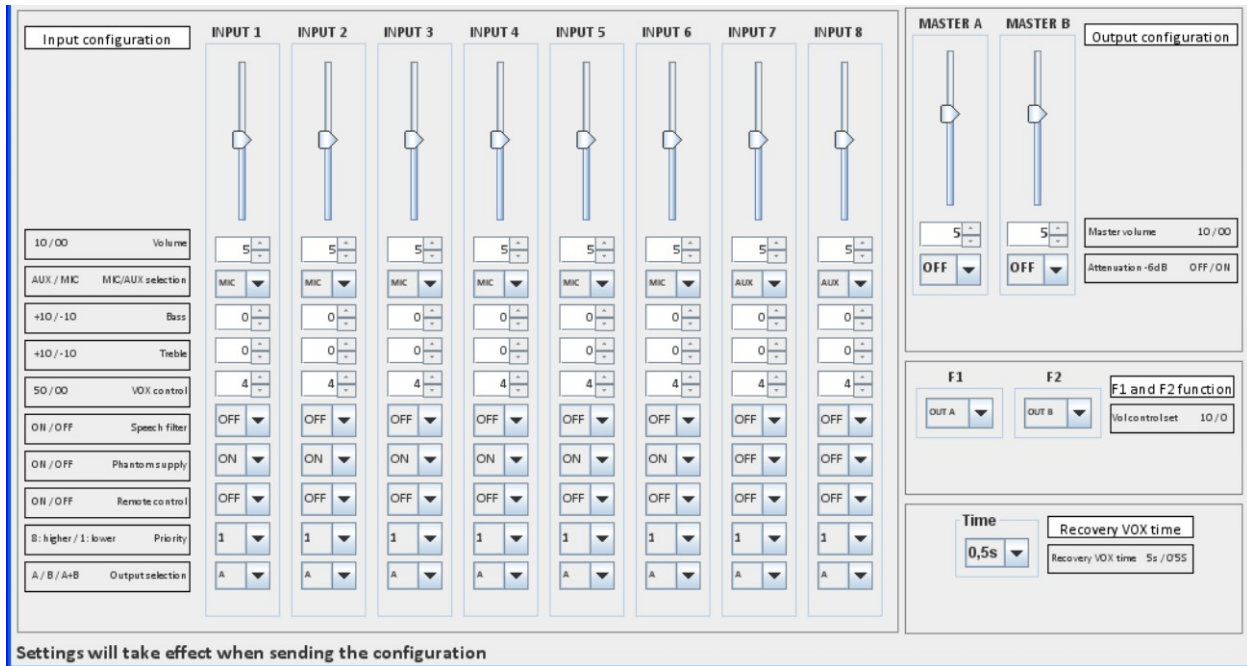
A-7. Send the actual configuration

Once you have set all the configuration on SF-99, you will need to send it to the PX-99 by clicking on this icon.

B

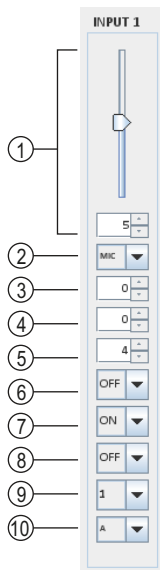
AUDIO ADJUSTMENTS PANEL

Using this panel, the user is able to configure every parameter of the PX-99 device using SF-99.



INPUTS CONFIGURATION

INPUT 1
INPUT 2
INPUT 3
INPUT 4
INPUT 5
INPUT 6
INPUT 7
INPUT 8



For each input:

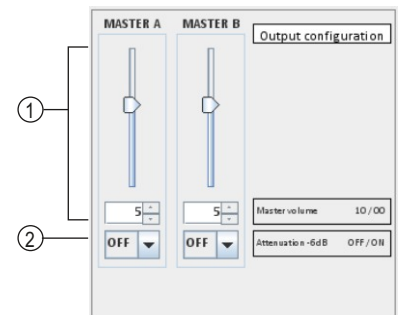
1. Volume control (values between 0 and 10)
2. Input selection: Microphone or auxiliary.
3. Bass control (values between -10 and 10)
4. Treble control (values between -10 and 10)
5. VOX level control (values between 0 and 50)
6. Enable/Disable speech filter (ON/OFF)
7. Phantom supply (ON/OFF)
8. Remote control selection (ON/OFF)
9. Priorities configuration (values between 1 and 8)
10. Output assignment (A/B/A+B)

OUTPUTS CONFIGURATION

OUT A
OUT B

1. Control of master volume (values between 0 and 10).

2. -6dB attenuation selection (ON/OFF)



SET FUNCTION TO REMOTE CONTROLS F1 AND F2

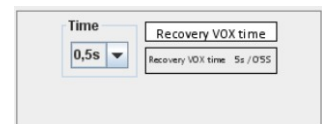
They can be assigned to the volume control of any input or output.

IN1 / IN2 / IN3 / IN4 / IN5 / IN6 / IN7 / IN8
OU1 / OUT2



VOX RECOVERY TIME ADJUSTEMENT

Values between 0,5s (standard) and 5s.



IMPORTANT!

The equipment does not work in real time with the preamplifier. The configuration data must be sent or received in every case.

Existing work conditions:

1. If an input has its priority set to 1, the remote control will switch to OFF.
2. If the auxiliary input is chosen, the phantom power and the speech filter will be disabled.